



Red Review

OFFICIAL MATCHDAY PROGRAMME SEASON 2017/18 ISSUE 16 PRICE £3
SATURDAY 30TH DECEMBER 2017 K.O 3:00PM V NOTTS COUNTY

IMAGINE
CRUISING



DAVID M. COE
FINANCIAL PLANNING LTD



Nationwide

C/F/M
COTSWOLD
FARM MACHINERY



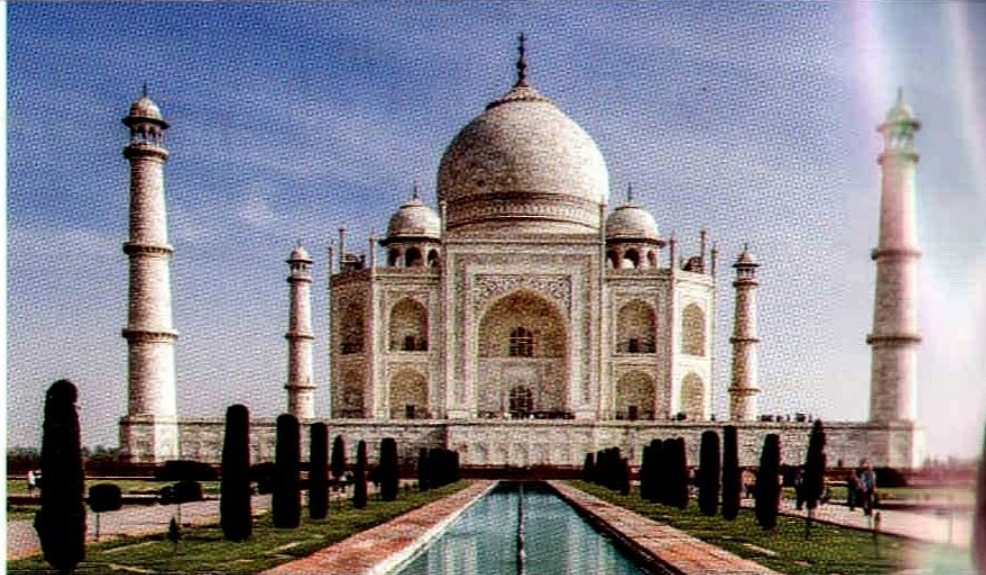
AVON
TYRES



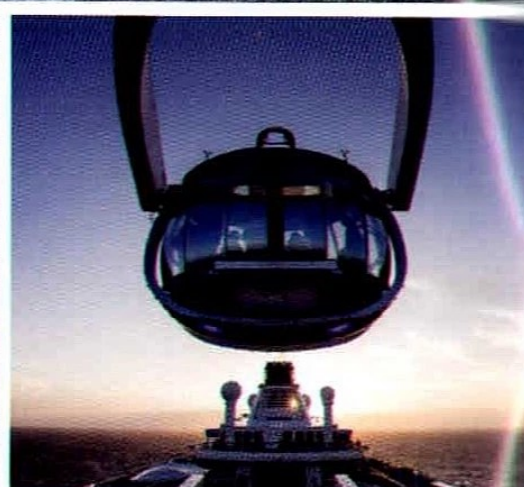
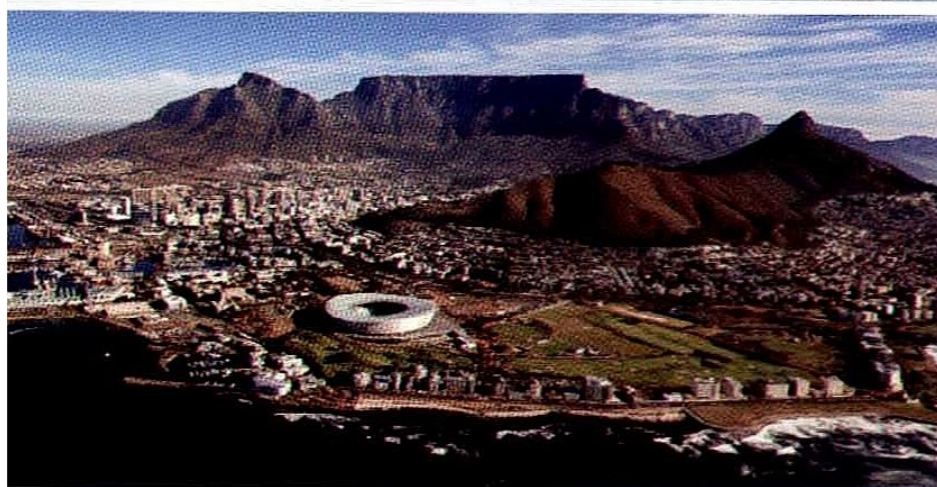
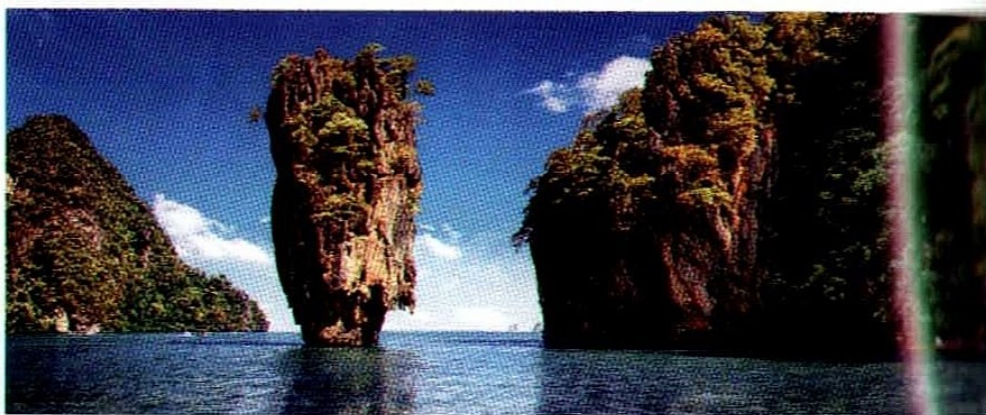
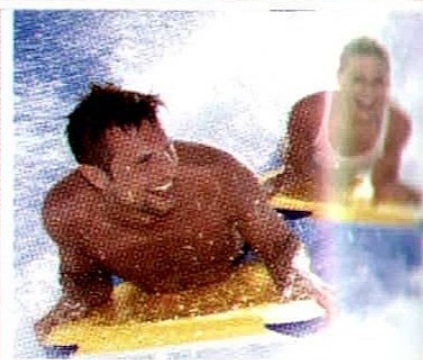
Quote
'IMAGINE STFC'
TO RECEIVE

**5%
OFF**

your cruise holiday



IMAGINE[®]
CRUISING



Call us on
 **0800 840 5871**

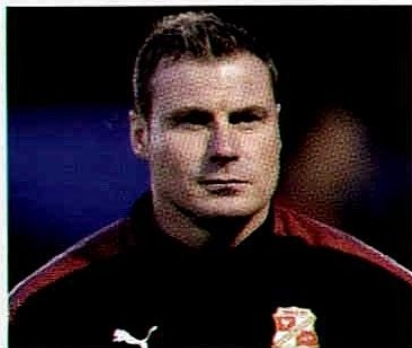
Cruise holidays for all imaginations
imaginecruising.co.uk

Contents

04

DAVE FLITCROFT

The Gaffer gives his views ahead of our final game of 2017



10

CAPTAIN NOTES

Olly Lancashire wants to end 2017 with a bang against Notts today



14

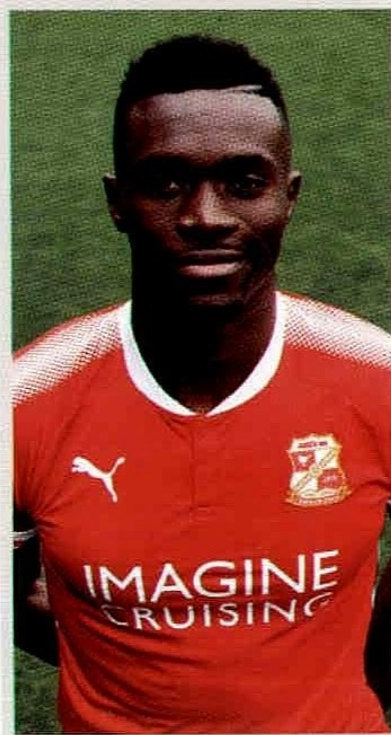
NOTTS COUNTY

Get the lowdown on today's visitors

24

IN-DEPTH WITH

Amine Linganzi is hoping to play his part as Town look to go into the New Year on a high



44

JUNIOR REDS

Fun and games for the little ones

56

ACTION REPLAY

Pictures and stats from our Boxing Day clash against Luton

63

MOMENT IN TIME

We take a look back at a memorable clash against The Magpies



SWINDON TOWN FOOTBALL CLUB

The Energy Check County Ground,
County Road, Swindon, SN1 2ED

Switchboard: 0871 876 1879

STFC Store: 0871 876 1993

Websites: www.swindontownfc.co.uk

www.stfcdirect.com

Honorary President: Mike Spearman

Chairman: Lee Power

Directors: Lee Power

Non-Executive Vice Chairman: Clem Morfoni

Non-Executive Directors: Veljko

Jovanovic, Roger Terrell, Xavier Austin

Chief Executive: Steve Anderson

Chief Financial Officer: Deborah Carney

Chief Operating Officer: Mark Isaacs

First-Team Manager: David Flitcroft

First-Team Assistant Manager: Ben Fletcher

Head of Performance: Chris Neville

Head of Goalkeeping: Dean Thornton

Kit Men: Ryan Sharland & Ollie Murphy

Academy Director: Seamus Brady

Academy Manager: Jeremy Newton

Head of Coaching: Lee Peacock

Under 18's Manager: Alan McLoughlin

Academy Skills Coach: Sean Wood

CLUB HONOURS

Football League Cup Winners: 1968/69

FA Cup Semi-Finalists: 1909/10, 1911/12

Football League Second Tier Play-Off

Winners: 1989/90, 1992/93

Football League Third Tier Winners:

1995/96 Runners-Up: 1962/63, 1968/69

Play-Off Winners: 1986/87

Football League Fourth Tier Winners:

1985/86, 2011/12

Southern League Winners: 1910/11,

1913/14

Football League Trophy Finalists:

2011/12

FA Youth Cup Finalists: 1964

FA Charity Shield Runners-Up: 1911

Anglo-Italian Cup Winners: 1969/70

Anglo-Italian League Cup Winners' Cup

Winners: 1968/69

Dubonnet Cup Winners: 1909/10

Wiltshire Cup Winners: 1886/87,

1887/88, 1888/89, 1889/90, 1890/91,

1891/92, 1892/93, 1896/97, 1903/04, 1919/20

Editor: Andrew Steele-Davis

Contributors: Paul Plowman

Designer: Sian Pryce

Design & Print: Curtis Sport



Photography: Rob Noyes, PA Photos,
Action Images, Richard Wintle/Calyx

For advertising sales call:

0844 358 2668

SWINDON TOWN FOOTBALL CLUB STAFF:

Club Secretary Ray Murphy / Account Assistant Sarah Stevens \ Head of Commercial & Marketing Adam Wainwright / Commercial & Marketing Executive Kay Wainwright / Head of Media & Communications Andrew Steele-Davis / Head of Ticketing Danny Lee \ Head of Retail Jordan Higgs / Retail Assistant Vicki Eyles \ Club Receptionist Amy Wilkins \ Centreplate Catering Site Manager Chris Abrook \ Centreplate Sales & Event Manager Karen Abrook \ Head Groundsman Marcus Cassidy \ Stadium Maintenance \ Fred Brown & Matthew Vernon / Official Club Photographer Rob Noyes \ Club Chaplain Simon Stevenette \ Matchday Press Officers Paul Plowman & Chris Lapham \ STFC Chairman Kirsteen Fraser / STFC Management Jon Holloway \ STFC Staff Clive Maguire, Shane Hewlett, Torn Cox, Dave Ridley, Abby Picton, Michael Booroff, James Sims, Charlie Forster, Alfie Holloway, Andrea Clayton.



DAVE *Flitcroft*

GOOD AFTERNOON EVERYONE AND WELCOME TO THE
ENERGY CHECK COUNTY GROUND ONCE AGAIN FOR OUR
SKY BET LEAGUE TWO FIXTURE AGAINST **NOTTS COUNTY**.

I want to start by extending a warm welcome to Kevin Nolan, his staff, players, directors and supporters of County to Wiltshire today.

It's certainly been a strange week going from the win and performance at Crewe to the defeat versus Luton.

The Crewe performance and win was achieved due to the players being totally committed to the game plan and executing it with precision and desire. We played with a great intensity and quality to totally dominate and beat Crewe.

After such a convincing win, it was hard to envisage that as a group we would concede five goals in the second-half against Luton.

We are all hurting following the defeat to Luton Town on Boxing Day and I must apologise to everyone who came out and backed us because the second-half performance wasn't good enough. There was a bumper crowd in attendance and, sadly, we didn't play our part on the day which was extremely disappointing.

I felt that we more than matched them in the first-half, we had a good structure to the team, we played on the front-foot and I was very comfortable going in at half-time with a clean sheet.

After the first goal went in, we lost focus and conceded ground to them. We lost discipline in our shape and structure and Luton exploited this opportunity with ruthless execution.

I do believe that we can learn from the past, but I don't believe in being stuck in the past and we have now have an opportunity to move on from the Luton defeat with an positive performance against Notts County. We've been working incredibly hard to come up with a game-plan that will give us the best possible chance of getting all



three points and I'm fully expecting a response from the boys today.

We've played Notts County once already this season and, like Luton, they are enjoying a superb season so far and deserve to be where they are in the table. They've got plenty of experience and character and it will be another test for us this afternoon.

We owe you a real performance and we'll be doing everything we can to bounce back come 5pm.

Let me finish by wishing you and your families a very Happy New Year and I'll see you back here in a fortnight for the visit of Forest Green Rovers.

Let's keep driving forward together as one.

DAVE FLITCROFT.

“

The Crewe performance and win was achieved due to the players being totally committed to the game plan and executing it with precision and desire. We played with a great intensity and quality to totally dominate and beat Crewe.”

THINK FAST ACT FASTER

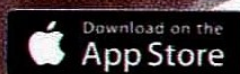


BET IN-PLAY FASTER WITH SKY BET

- NEW** LIVE MATCH IOS APP NOTIFICATIONS
- NEW** FASTEST EVER IOS APP LOADING
- NEW** IN-PLAY SCORE CENTRE

NEW & EXISTING CUSTOMERS

DOWNLOAD THE APP NOW



sky bet

BETTING, BETTER

WHEN THE **FUN** STOPS **STOP**

gambleaware.co.uk

18+

18+ only. T&Cs apply. Visit skybet.com for more information.

LATEST NEWS

SMITH RETURNS TO MILLWALL

Swindon Town Football Club can confirm that Harry Smith has returned to parent club Millwall.

The towering frontman joined the Reds on a season-long loan back in July following an impressive start to life in professional football with the Lions.

Adding to the wealth of attacking options at SN1 this season, Smith made his Town debut away at Carlisle United on the opening day of the season and went on to score three goals in 18 outings for the club.

Speaking at his post match press conference on Boxing Day, Swindon Boss Dave Flitcroft explained the reasons for Smith's early departure.

"Harry will go back to Millwall," he said.

"He's not been too pleased with the game time he's had or not had around this period.

"I wanted everyone on my page, on the same page and everyone looking forward to the second-half of the season.

"Harry has gone back and we'll make that official."

We would like to thank Harry for his efforts during his time with us and we wish him the best of luck for the future.






Axis are proud sponsors of

Swindon Town Football Club

AXIS M&E UK Ltd
BUILDING SERVICES
www.axisgroupuk.com

We are a multi-discipline building services contractor with offices in Australia, New Zealand, Asia, UK, USA.

 /axisgroupuk

 @axisMandE

LATEST NEWS

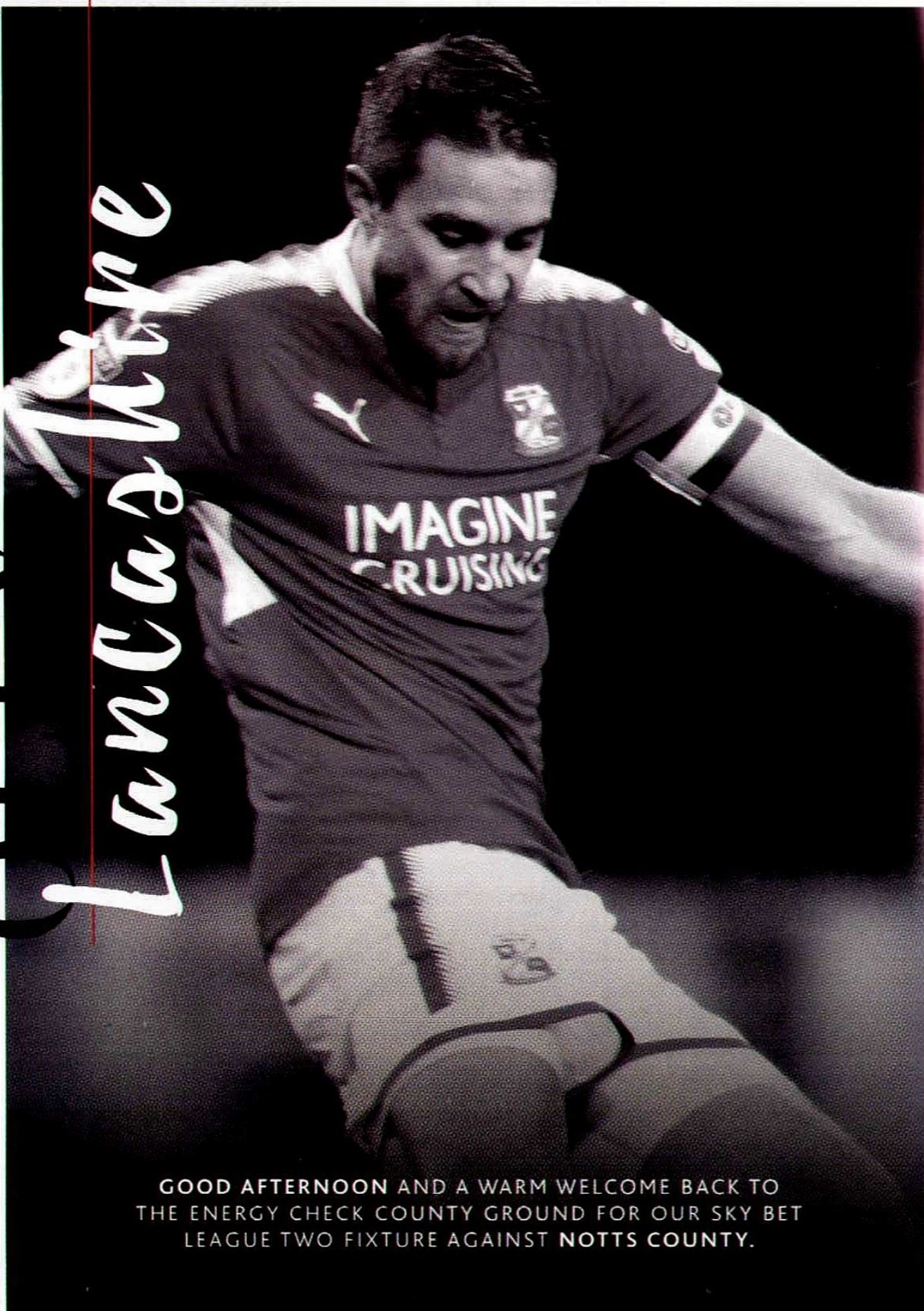
TOWN STARS MAKE HOSPITAL VISIT

Five members of the Swindon Town first-team squad made a visit to the Great Western Hospital before Christmas to spread some festive cheer on the Children's Ward!

Paul Mullin, Amine Linganzi, Matt Preston, Kaiyne Woolery and Kellan Gordon handed out gifts and posed for pictures with the young patients and their parents. Here are the pick of the snaps from the visit.



OLIVER Lancashire



GOOD AFTERNOON AND A WARM WELCOME BACK TO THE ENERGY CHECK COUNTY GROUND FOR OUR SKY BET LEAGUE TWO FIXTURE AGAINST NOTTS COUNTY.

We are all hurting as a group after our heavy Boxing Day defeat to Luton Town here and we know it wasn't anywhere good enough. We have set ourselves a standard this season and we were a long way from meeting that in the second-half, which was extremely disappointing.

Luton are a very, very good team and they are top of the table on merit but I thought we more than matched them in the first-half. We created a couple of good opportunities at the back and we were able to restrict them to few chances too, which gave us a good platform to build on heading into the half-time break.

However, we seemed to down tools after the first goal went in and once they scored their second we threw the game-plan out of the window and too many players then did their own thing. It is very hard at any level of football to play when people are off doing their own thing and it was a very long second-half.

You have to give Luton credit because they were very ruthless in what they did on Tuesday. They only had six or seven shots all game but they were able to score five goals from that and they punished our mistakes, which is what good teams do.

Our home form is the million dollar question and we've been asking it all season. You only have to look at our away form to know that we aren't a bad team but we're still scratching our heads, we're halfway through the season now and we haven't picked up at home still. It is very frustrating and there has got to be a reason why. As soon we get hit with a set-back at home we seem to fall apart.



There shouldn't be a fear factor playing at home but whatever the problem is we need to find it and soon because, if we get the home form right, then we know we will be right up there come the end of the season.

We've played Notts County before this season, it was a close game and we lost to a penalty in the end. Again, we've just got to approach it as we do any other game and we are desperate to put things right and make amends for Boxing Day. We owe you a real decent showing at home and we've been working hard on a game-plan since Tuesday to give us the best chance of securing what would be a big three points today.

I want to finish by wishing you all a very Happy New Year - enjoy the game this afternoon.

OLLY LANCASHIRE, Captain

“

Our home form is the million dollar question and we've been asking it all season. You only have to look at our away form to know that we aren't a bad team but we're still scratching our heads, we're halfway through the season now and we haven't picked up at home still. It is very frustrating and there has got to be a reason why.”



INTRODUCING THE POWER OF 8TH GENERATION



**THINNER. LIGHTER. MORE POWERFUL PCs
WITH INTEL INSIDE.®**

NEW 8TH GEN INTEL® CORE™ PROCESSORS

John Hughes

Racehorse Transport Ltd

John Hughes Racehorse Transport is based in Lambourn, specialises in moving all bloodstock around UK, France & Ireland.



*A professional and friendly service
with over 25 years' experience.*

For all enquiries, please email John at jhrtltd@gmail.com

CAPTAIN'S SPONSOR



C | F | M
COTSWOLD
FARM MACHINERY

NEW & USED STOCK • PARTS • SERVICING

A leading Agricultural & Horticultural machinery specialist

New and used equipment available from Case IH, JCB, Kuhn, Iseki, Simba Great Plains, Dalbo, Bomford, AW Trailers, Suzuki, Mountfield and Stiga

01285 720606 • www.cotswoldfarm.co.uk

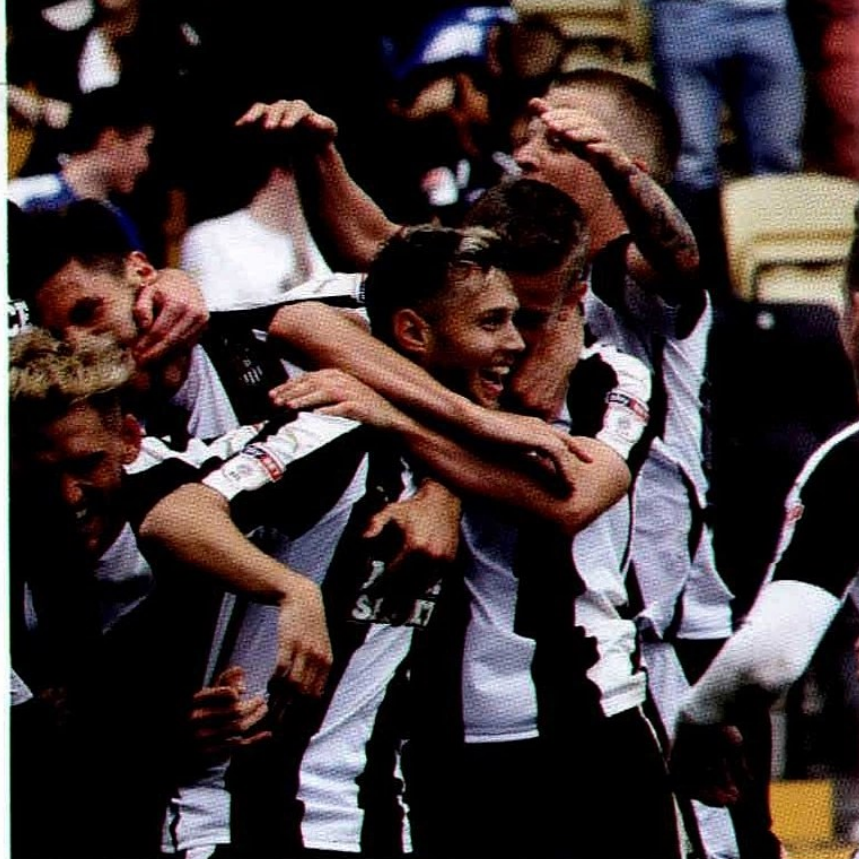
Fosse Cross Industrial Estate, Fosse Cross, Cheltenham, Gloucestershire GL54 4NW

FOUNDED
155 YEARS AGO IN
1862

NICKNAMED
**THE
MAGPIES**

PLAY AT
**MEADOW
ROAD**

MANAGED
**BY FORMER
PREMIER LEAGUE**
STAR
KEVIN NOLAN



NOTTS COUNTY



The Magpies are enjoying a season to remember so far and they will be hoping for a strong finish to 2017 in order to further boost their promotion hope.

After beating the drop last term following the appointment of former Premier League attacker Kevin Nolan, County have upped their game this season and they look a good bet to keep their foot on the gas and secure a long awaited return to the Sky Bet League One.

It looks to be a bright future for Notts overall with enthusiastic Chairman Alan Hardy making progress off the field, while Nolan is certainly working his magic on it after making a number of shrewd signings during his time in the dugout. Nolan has managed to create a

squad that boasts plenty of experience and talent, with on-loan Nottingham Forest youngster Jorge Grant really bursting onto the scene this term with fourteen goals and six assists.

Shola Ameobi and Jon Stead are still going strong upfront and County are also able to boast strength in depth, which will stand them in good stead for the second-half of the season. Notts will arrive at SN1 today looking to sign off a good year on a high and consolidate their place in the top three of League Two.

Notts came out on top the last time these two sides met earlier this season with a Jon Stead effort proving the difference at Meadow Lane in September.

*did you
know?...*

NOTTS COUNTY ARE OFFICIALLY RECOGNISED AS THE OLDEST CLUB IN THE FOOTBALL LEAGUE - CELEBRATING THEIR CENTENARY IN 1962.



HEAD COACH

KEVIN NOLAN

Appointed in January 2017 after Alan Hardy's takeover of the club, Nolan and Notts have been a perfect match.

The Scouser inherited a team on a 10-game losing streak, under a transfer embargo and in danger of relegation but recruited wisely in the transfer market and turned fortunes around to keep the world's oldest Football League club in the EFL. More shrewd business in the summer saw the former Bolton, Newcastle and West Ham midfielder put together a squad which has enjoyed a fantastic start to the 2017-18 season.

Defeat on the opening day at Coventry was far from the perfect beginning but Nolan's men went their next 10 games unbeaten to steadily climb the table. Six wins from seven in September saw his team hit the summit of League Two and was enough for Nolan to claim the first manager of the month award of his embryonic career in the dugout.

The success the 35-year-old has had led to him being handed a new three-year contract in September by Hardy, who described the manager as a "star in the making". Notts are currently flying high in the Sky Bet League Two table and they look on course to achieve what would be a fantastic promotion.

Nolan enjoyed a superb career, spent mostly in the Premier League, and he has made an impressive start to life in the dugout as he continues to take Notts to new highs.

1894

FA CUP WINNERS

1891

FA CUP FINALISTS



ROLEX

THE DATEJUST 41

The new generation of the essential classic, with a new movement
and design that keep it at the forefront of watchmaking.
It doesn't just tell time. It tells history.



OYSTER PERPETUAL DATEJUST 41



DEACONS

11-15 Wood Street, Old Town, Swindon, Wiltshire SN1 4AN
www.deacons-jewellers.com

WATCH FEATURED SUBJECT TO STOCK AVAILABILITY

PLAYER PROFILES



01

ADAM COLLIN

The goalkeeper signed a two-year contract at Meadow Lane in the summer of 2016. It brought to an end a three-year stay at Rotherham United, where the stopper helped the Millers to win promotion to the Championship in 2013-14 through the League One play-offs. Collin had previously spent four years with Carlisle United after being picked up from local non-league outfit Workington. Currently working his way back from injury.

02

MATT TOOTLE

Comfortable at full back or in midfield, Tootle is a versatile operator and a key member of the Notts squad. He started his career with Crewe Alexandra, spending 16 years at Gresty Road from when he first joined the club's academy to leaving for Shrewsbury Town in 2015.

The defender was twice a winner at Wembley with the Alex as they beat Cheltenham Town 2-0 in the 2011-12 League Two play-off final before the Railwaymen defeated Southend United 2-0 in the final of the EFL Trophy. After one season with the Shrews, he joined Notts on a two-year contract until 2018.

03

CARL DICKINSON

Dickinson dropped into League Two for the first time in his career to sign for Notts in the summer of 2016. The defender, who has a plethora of experience in League One and the Championship, joined the club from Port Vale, where he was captain during his three years at Vale Park. The combative 30-year-old began his career at Stoke City, helping the Potters to reach the Premier League before moving to Watford in 2011.

04

ELLIOTT HEWITT

Hewitt has operated across defence and midfield for County with his versatility proving to be a valuable asset. The Welshman started out at Macclesfield Town, where his form earned a move to Championship outfit Ipswich Town. During his time at the Tractor Boys, Hewitt spent time on loan to Gillingham and Colchester before penning a two-year deal at Notts upon his release from Portman Road.



08

**MICHAEL O'CONNOR**

A combative midfielder, O'Connor was signed from Port Vale in the summer of 2016 and appointed club captain by then-manager John Sheridan. The Northern Irishman, capped 11 times by his country, won promotion in successive seasons with Rotherham United and has experience of playing at a higher level from his time with Scunthorpe United. After two years at Port Vale, the central midfielder turned down the offer of a new contract with the Valiants in favour of a move to Meadow Lane.

10

**JORGE GRANT**

The midfielder crossed the River Trent in July 2017, for his second loan spell with the club from Nottingham Forest, after an initial short term loan in the 2016-17 season. A former player at the Nike Academy, Grant made an immediate impact in his first spell, scoring four goals in his first six games. Jorge has been in great form this season having contributed fourteen goals and six assists to the cause so far.

11

TERRY HAWKRIDGE

The winger put pen-to-paper on a two-year contract at Meadow Lane, following the expiration of his contract at Lincoln City. Hawkridge was a key part of the Lincoln team that won the National League in the 2016/17 season, scoring both goals in the 2-1 win against Macclesfield which confirmed the Imps' return to the EFL. The 27-year-old, who was born in Nottingham, had spells with local sides Carlton and Hucknall at the start of his career before a strong season with Gainsborough earned him a move to Scunthorpe United and a chance in the EFL.

After three seasons at Glanford Park, during which time he helped the Iron win promotion from League Two, he joined Lincoln on a permanent deal following a successful loan spell. And, after an incredible season which saw him play in the quarter-finals of the FA Cup, Hawkridge chose Meadow Lane as his next destination.



24

ROBERT MILSOM

Milsom arrived at Meadow Lane from Rotherham United in June 2015. The midfielder had helped the Millers to win promotion from League One through the play-offs in 2013-14, coming off the bench in the final at Wembley. He had previously spent time with Fulham, Bury, Southend and Aberdeen. His industrious and tenacious performances in the middle of the park led to him winning the fan and player votes for the 2016-17 Player of the Season award.

09

**SHOLA AMEOBI**

Ameobi signed a short-term contract at Meadow Lane in February 2017 as a free agent. The striker had been out of the game for nine months following his release by Fleetwood Town. The former Nigerian international is best known for his time with Newcastle United, where he spent 14 years as a senior professional, playing all but one season in the Premier League.

30

**JON STEAD**

Stead penned a two-year contract with the Magpies in the summer of 2015 after leaving Bradford City. The veteran striker has plenty of experience from higher levels from his time with the likes of Blackburn Rovers, Sunderland and Sheffield United. The 34-year-old has been Notts' top scorer for the two seasons he has been at Meadow Lane and he has five goals and four assists to his name so far this term.

DAVID M. COE

FINANCIAL PLANNING LTD



Proud Sponsors of Swindon Town Football Club

Established in 2003, we are a family practice based in Swindon. Collectively we have over 100 years industry experience and look to develop long term personal client relationships specialising in:

- Investment Planning
- Mortgage Advice
- Pensions/Retirement Planning
- Insurance
- Trustee Investment Planning
- Inheritance Tax Planning

For further details please contact us on:

Tel: 01793 531351

Your home may be repossessed if you do not keep up repayments on your mortgage.

Email: David.Coe@sjpp.co.uk

website: www.sjpp.co.uk/davidcoe



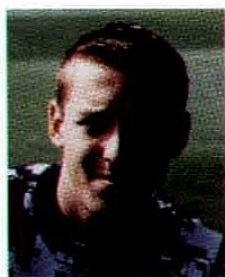
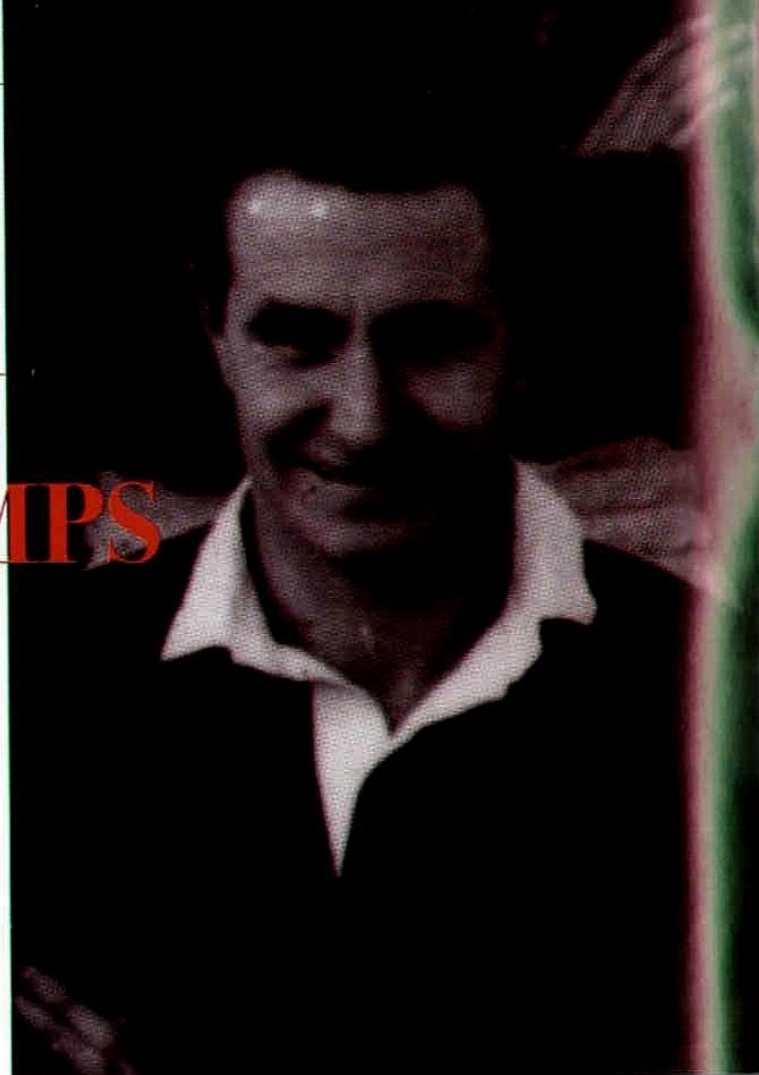
BREWED
WITH SKILL,
CRAFTSMANSHIP
& IMAGINATION



VISIT WWW.ARKELLS.COM TO FIND OUT MORE

A BOOT IN BOTH CAMPS

11 PLAYERS WHO HAVE SERVED **BOTH CLUBS**



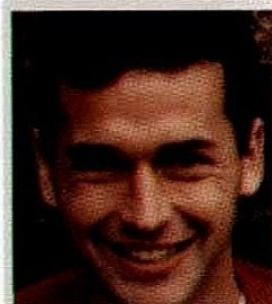
STEVE MILDENHALL

The 6'4" Swindonian played in two League Cup ties against Cambridge while a trainee, but Steve's League debut for Town was as a striker! It came in January 1997, when Steve McMahon sent him on at Tranmere for the last few minutes. 'Mildy' did not get a run as first choice until January 2001 but, in the July, shortly after signing a new contract to stay at the County Ground, he signed for County and remained there until the end of 2004. STFC 38 apps / NCFC 90



FRAZER McHUGH

Nottingham-born midfielder Frazer was still a trainee with Town when he made his first team debut at 17 years and 29 days in August 1998 - and when he was given his first start by Jimmy Quinn on the final day of that season against Barnsley. Released in May 2001, Frazer then played for several non-League clubs before securing a contract at Bradford in March 2003. He moved to Meadow Lane ten months later. STFC 24 apps / NCFC 13

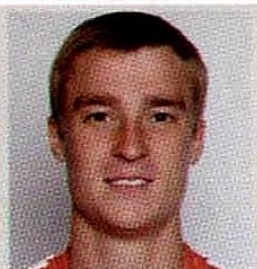


COLIN CALDERWOOD

The cool Glaswegian was a rock in the centre of Town's defence for eight years. Immediately made club captain in 1985, Colin was 'ever-present' in his initial two seasons at the County Ground - leading the side to the Fourth Division title in the first and promotion to the second tier in the next. He left after helping Swindon reach the Premiership - where he would feature for seven years. Colin briefly joined County on loan from their city rivals in March 2001. STFC 414 apps / NCFC 5

STEPHEN DARBY

Stephen was signed on loan from Liverpool by Danny Wilson for the final two months of 2009/10, to replace the injured Kevin Amankwaah at right-back. Then just 21, he settled in quickly and calmly tucked away the penalty that saw Town through to Wembley for the play-off final. After a Europa League outing in Macedonia, Stephen was loaned out to Notts in November 2010, the move being extended until the end of the season. STFC 15 apps / NCFC 27



ALAN SHEEHAN

The Irish left-sided defender arrived on loan from Leeds in November 2009 and stayed for the remainder of the season, featuring on the opposite flank to Stephen Darby as the campaign drew to a close. Alan then signed a one-year deal at the end of August 2010, scoring within ten minutes of his first start at Walsall. Following Town's relegation, he signed for County, spending three years there and a further three months on loan from Bradford in 2015. STFC 49 apps / NCFC 142



**BOB INNES**

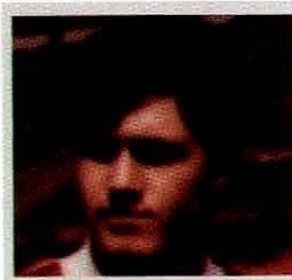
A Scot from Lanark, Bob had four years of top tier experience in the Football League in Nottingham - two either side of the Trent - prior to his arrival at the County Ground in 1906. After a run of 13 games at the end of 1906/07, Bob lost his place to young Bristolian Billy Tout - who was in no mood to give it back. Bob announced his retirement in 1910, but made a brief comeback with Swindon Victoria in 1914. STFC 33 apps / NCFC 51

**HARRY LUNN**

A right-winger or inside-right from Ulster, Harry's first port of call in England was at Meadow Lane in the summer of 1946. In three games against Town that season, he must have impressed as Louis Page invested £6,500 in bringing him to Wiltshire in the summer of 1948. The goal hungry Maurice Owen and Morris Jones immediately benefitted from his accurate centres, hitting 43 goals between them. And Harry hit 30 goals himself in his six seasons at the County Ground. STFC 215 apps / NCFC 27

**JACK SMITH**

Jack arrived at the County Ground from Watford in June 1961 after seven years with his home town club Hartlepool. Second top scorer to Ernie Hunt in Town's promotion season in 1962/63 with 24 goals, he almost signed for Bournemouth in the December, along with Bill Atkins. But the deal fell through and he went to Brighton. Jack joined Notts a fortnight into the 1966/67 season, staying at Meadow Lane until December 1968. STFC 110 apps / NCFC 83

**PAUL RIDEOUT**

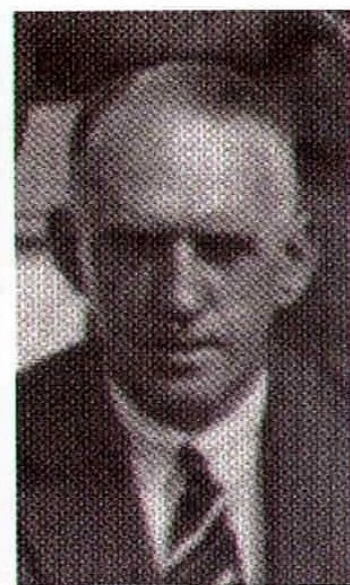
Paul signed schoolboy forms for Town at 14 before turning pro on his 17th birthday in August 1981. By then he had already made his League debut, which had come aged 16 years 107 days in the previous November. After hitting 23 goals in 51 games in 1982/83, Paul accepted the chance to play in the top flight with Villa. He returned to Swindon on loan from Southampton in March 1991, moving on to County in the September - when he scored in his first two games. STFC 114 apps / NCFC 16

**ERIC WEAVER**

Welsh winger Eric first joined Swindon on trial in November 1961 while with the RAF, which he had joined directly from school. He made his League debut ten days later! After a cartilage operation he went to Trowbridge where Bert Head's son David was in charge. Eric signed pro with Town in August 1965 - just as Mike Summerbee was off to Manchester City - and was with County for just four months, netting in four successive games in November 1967. STFC 59 apps / NCFC 18

**MATT RITCHIE**

Matt spent the first half of 2009/10 on loan at Meadow Lane before returning to Portsmouth at the end of December. Danny Wilson brought him to the County Ground on a temporary deal in the February but he was recalled to Fratton Park at end of March. A second loan was converted to a permanent move in January 2011 and Matt went on to contribute ten goals to the League Two title winning campaign in 2012. STFC 129 apps / NCFC 19



Swansea Town boss Neil Harris was appointed manager at the County Ground after Ted Vizard left for Queens Park Rangers in May 1939. As a player, he had been at Notts from November 1925 until the summer of 1927, after netting 100 goals in less than 200 appearances for Newcastle. But his career at Swindon stalled after just three games when War was declared. Following the government's acquisition of the County Ground in July 1940, Neil was given £12 in lieu of notice. He died from cancer aged 47 just 17 months later.

**OTHERS WHO SERVED BOTH CLUBS (EXCLUDING CURRENT STAFF):**

Jeremy Balmy, Jim Chalmers, Herbert Chapman, Paul Crichton, Richard Dryden, Paul Evans, Fred Fisher, Dominic Foley, Arthur Green, Neil Harris, Bert Hasell, Paul Ince, Johnnie Jackson, Ted Jeacock, Steve Jenkins, Jake Jervis, Albert Jones, Harry Keeling, Brian Kildine, Phil King, Ross MacLaren, Ken McPherson, Cristian Montano, Ronan Murray, Garry Nelson, Jimmy Poppitt, Roy Pritchard, Rhys Sharpe, Drissa Traore, Jordan Williams.

COMMERCIAL

with Adam Wainwright



GOOD AFTERNOON AND WELCOME BACK TO THE ENERGY CHECK COUNTY GROUND. LET'S HOPE THAT WE CAN FINISH 2017 OFF WITH A BANG BY SECURING ALL THREE POINTS TODAY.

We are pleased to report that across the hospitality floor today we have completely sold out and thus far it is our busiest fixture to date. We are also full to capacity for the local fixture with Forest Green Rovers on January 13th. A big thank you to all of you who have booked packages with us and supported us over this festive period. Looking beyond Forest Green we have got a number of games attracting good interest so we urge all those looking to book hospitality with us in the second-half of the season to get in there early.

We still have a small number of advertising and branding opportunities for any business large or small who would like more information on how they can promote their brand and services here. Please do not hesitate to get in touch. Please also look out for some great offers in the January window. New for this season we are also on the lookout for sponsors who would like to align themselves and support our Academy here at SN1. If this is a partnership that interests you then we would

very much like to hear from you to arrange a meeting.

As mentioned before, our partnership and sponsorship activation continues to gather pace with a number of our mainline sponsors. The Superfast Scorer half-time competition has been very well received and I know Relish Broadband, who sponsor this, have been very impressed with the volume of traffic through their social media when promoting this. We have also received lots of positive feedback from supporters who have enjoyed the entertainment. I believe that following the last instalment a red card may be introduced moving forward to curb Rockin' Robin's over zealous tackling! Many congratulations to the last Superfast Scorer, Daniel Scanlon who did it in eight point eight seconds.

Mascot experiences continue to sell extremely well but there is still good availability for our fixtures from Crewe Alexandra onwards. It really is a special day out which includes a number of fantastic benefits and great value for money, so treat that younger

Town fan in your life to a day they will always remember.

On to today and we welcome Intel as our Match Sponsor. Intel have supported both the club and our Football In The Community Trust for many years - we hope you enjoy your day with us. On to our Matchball Sponsors, John Hughes Racehorse Transport who are new to proceedings this afternoon. Enjoy your stay with us and hopefully we can treat you to three points. Last but certainly not least is our very good friends Cotswold Farm Machinery, who join us as Captain Sponsors today. Simon Carrington supports us fantastically well with a number of different sponsorships and we hope he and his team have a cracking afternoon with us. Finally, we hope that our eight mascots all have a day to remember today - hopefully three points will make it even more enjoyable!

CONTACT US...

ADAM
0330 002 0020
adam@swindontownfc.co.uk
KAY
0844 880 1086
kay@swindontownfc.co.uk

LUTON TOWN SPONSORS



IN-DEPTH WITH...





AMINE

Linganzi

LED BY HIS FAITH, AMINE LINGANZI KNOWS
THAT THE GOOD TIMES ARE JUST AROUND THE
CORNER FOR TOWN IF THEY KEEP BELIEVING IN
WHAT THEY ARE DOING...

IN- DEPTH WITH...

Amine, firstly, how was your Christmas?

I spent it with some friends because my wife and son are in France, but it was a good day.

Christmas is an important time for footballers because of the amount of games in quick succession, so it is all about remaining disciplined isn't it?

Yes, exactly. You need to eat properly and even when you are enjoying time with your family, you know you have a job to do so you need to stay fit. We have so many games over the festive period so it is really, really important that we stay focussed.

And it was nice to go into Christmas off the back of that brilliant 3-0 win at Crewe wasn't it?

It was really nice. We played well and although it wasn't great on Boxing Day, it isn't the end of the world. We've got 23 games left and nothing is impossible.



17/18 STATS...

GAMES PLAYED ----- 19

STARTS ----- 15

MINUTES PLAYED ----- 1,281

FOULS WON --- 11



You mentioned Boxing Day, it was obviously a result to forget but it is important to not dwell on that so we can bounce back as quickly as possible...

Exactly. This is League Two and we will learn from our mistakes and we've got to bounce back again.

You were with Portsmouth last season and played a part in their League Two title success, so you know all about the ups and downs in this division don't you?

First of all, my faith always tells me that nothing is impossible. Last season with Portsmouth we were behind Doncaster by 15 points and we ended up winning the league, so nothing is impossible and I believe we can do the same here. If we believe as players and as staff then nothing will stop us.

“

It wasn't great on Boxing Day, it isn't the end of the world. We've got 23 games left and nothing is impossible.”

SOME FACTS...

SQUAD

16

NUMBER

POSITION

CM

CENTRE
MIDFIELD

AGE

28

CLUBS
REPRESENTED

08

“

This is League Two and we will learn from our mistakes and we've got to bounce back again.

”

Will you now look to use that experience to help you this season?

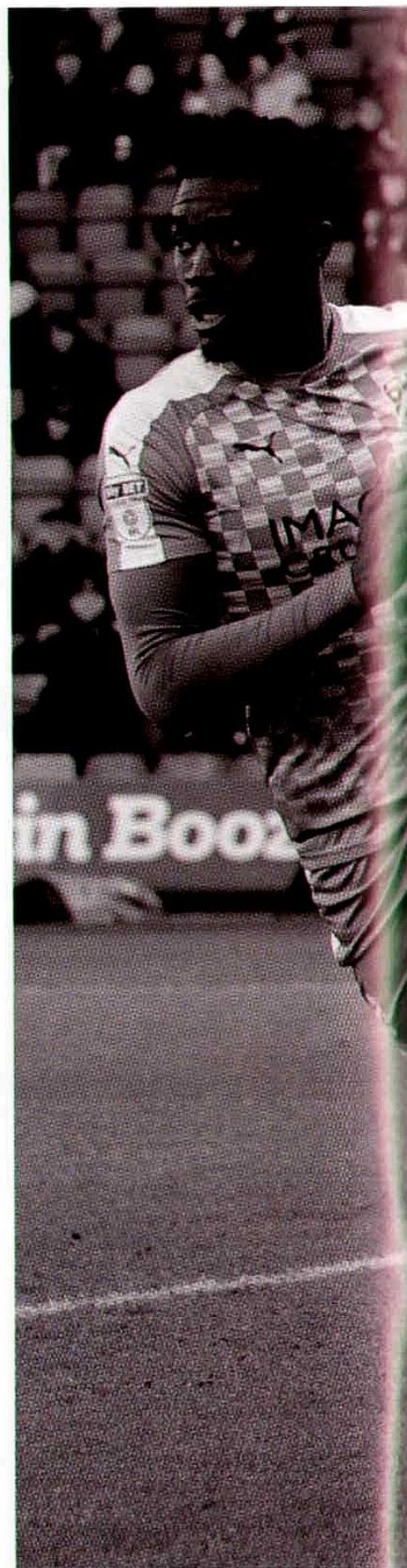
We all have to be a leader and we all have to be on the same page in our work. If we all focus on promotion then we will get promoted this season.

We're halfway through the season now so how would you rate your time in a Town shirt so far?

It was difficult in the beginning but I'm starting to feel a lot better. I have to do more though, I have to contribute more, I have to be more aggressive and I have to do more for the team.

Finally, Notts County today will pose us with another tough test but it is a perfect opportunity to try and finish 2017 on a high isn't it?

You need to have a mindset in football and we need to press hard, we need to be aggressive and it isn't going to be pretty in this league, so we need to keep fighting and we will get results for sure. We have done so many times away so we need to repeat that at home and play with no fear at home.





“

It was difficult in the beginning but I'm starting to feel a lot better. I have to do more though, I have to contribute more, I have to be more aggressive and I have to do more for the team.”

NEW & USED STOCK • PARTS • SERVICING

**A leading
Agricultural
& Horticultural
machinery
specialist**

C | F | M
COTSWOLD
FARM MACHINERY



01285 720606 • www.cotswoldfarm.co.uk

Fosse Cross Industrial Estate, Fosse Cross,
Cheltenham, Gloucestershire GL54 4NW



PERFORMANCE. AT EVERY LEVEL.



Our talented team at Avon, have developed a range of tyres to perform at every level. Find out more at www.avon-tyres.co.uk



OFFICIAL PARTNERS

AVON
TYRES



ON ROAD. ON TRACK. ON AVONS.



**CREWE
ALEXANDRA**



REFEREE
Eddie Ilderton

Attendance: 3,736 | 23/12/2017 | Gresty Road



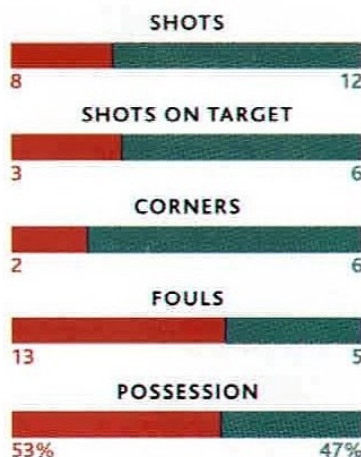
**SWINDON
TOWN**

Scorer: Kaiyne Woolery (7), Amine Linganzi (17), Luke Norris (20)

0-3



Subs: Richards, Walker, (Charlie Kirk 55), Reilly, (Conor Grant 59), Stubbs, (Chris Porter 59)

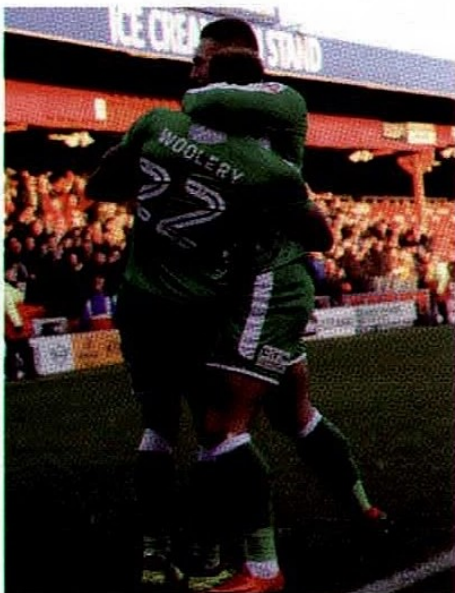


Subs: Charles-Cook, Robertson, Knoyle, McDermott, (Kellan Gordon 70), (Ellis Iandolo 83), (John Goddard 90)

Booked: Luke Norris, Ben Purkiss, Kaiyne Woolery







Message Board

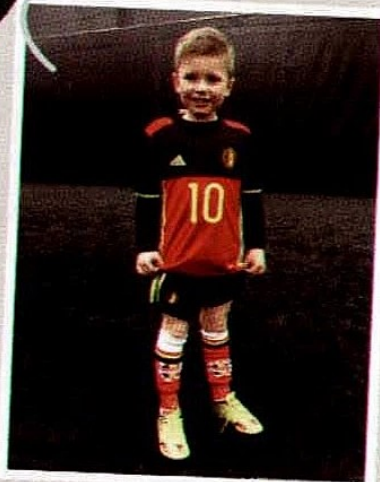


HAPPY BIRTHDAY TONY BUSSON

Happy 64th Birthday to our Dad and Lifelong town fan who can usually be found in the Better Town End cheering on the boys. Thank you for everything you do for us, you deserve your VIP day at the game today. Have a great day, love you loads.

Love from Dan, Amy and Angela

XXXX



HAPPY BIRTHDAY RAWLEIGH FREMLIN

Rawleigh celebrated his 7th birthday on the 28th December. Lots of love from all your Family & Friends.

TODAY'S Mascots...



MOLLY KILMINSTER

Age: 8

School: Wanborough Primary School

Teams Played For: Wanborough Wasps

Hobbies/Likes: Football, Athletics, Cooking & Painting

Favourite Town Player: Oliver Lancashire



JACK MCCOLL

Age: 9

School: Marlborough St Mary's Primary

Teams Played For: Marlborough Youth FC

Hobbies/Likes: Playing Football, Swimming, Bike Riding

Favourite Town Player: Luke Norris



JAYDEN NASH

Age: 10

School: Grange Junior School

Teams Played For: Stratton Juniors U10 Cougars

Hobbies/Likes: Football, Swimming & Gaming

Favourite Town Player: Kaiyne Woolery



BARNEY LANE

Age: 9

School: St Sampsons, Cricklade

Teams Played For: Ashton Keynes Youth

Hobbies/Likes: Football, X Box, Match Attack Card Collecting, & Go Pro Filming

Favourite Town Player: Lawrence Vigouroux



DEXTER LIEBOW

Age: 8

School: Two Mile Hill School

Hobbies/Likes: Kick Boxing, Football & Playing Computer Games

Favourite Town Player: Kaiyne Woolery



ZACK SELWAY

Age: 8

School: Milton Primary

Hobbies/Likes: Taekwondo, Reading & Playing Computer Games

Favourite Town Player: Kaiyne Woolery



REUBEN DAVIES

Age: 7

School: Ramsbury

Teams Played For: Ramsbury School

Hobbies/Likes: Football & Lego

Favourite Town Player: Olly Lancashire



OLIVER EMBEARY

Age: 7

School: Chedworth School

Teams Played For: Northleach Juniors FC

Hobbies/Likes: Football & Farming

Favourite Town Player: Luke Norris

WILLIE PENMAN



(1939-2017)

IT IS WITH SADNESS THAT WE HAVE TO REPORT THE
PASSING OF ANOTHER OF SWINDON TOWN'S LEAGUE
CUP WINNING SQUAD OF 1969.

Willie spent four years at the County Ground, from 1966 to 1970, when he moved to Walsall for three seasons. He was then appointed manager at Cheltenham, but while there he regularly flew out to Ireland on Sundays to play for Dundalk!

In November 1964 he had shown his striking prowess at Swindon, netting twice as Newcastle United won 6-1 on their way to winning promotion to the top division, while earlier in his career Fife-born Willie had spent five years at Ibrox.

Danny Williams signed him for around £10,000 at the end of August 1966 and Willie grabbed twelve goals in his first season in Wiltshire, playing alongside Dennis Brown and then Pat Terry.

Five goals in 13 games followed at the start of 1967/68, but the manager then encouraged Willie to switch to more of an attacking midfield role and by the

time the side had advanced to Wembley, he had lost his regular place and made only eleven starts that season.

Back in the Fourth Round, Willie had struck the last goal (pictured) in a 3-0 replay victory over Coventry City and he also started in the Fifth Round tie at Derby.

For all three semi-final games against Burnley he sat on the bench - being thrust into the action in the third at the Hawthorns, replacing Don Heath at the start of the crucial period of extra-time. And at Wembley he came on with twelve minutes of normal time remaining, replacing John Smith and ensuring that the fine work in the centre of the park continued as one of the biggest upsets in the modern era of the game unfolded in extra time.

Swindon Town Football Club extends its condolences to all Willie's family and friends at this sad time.



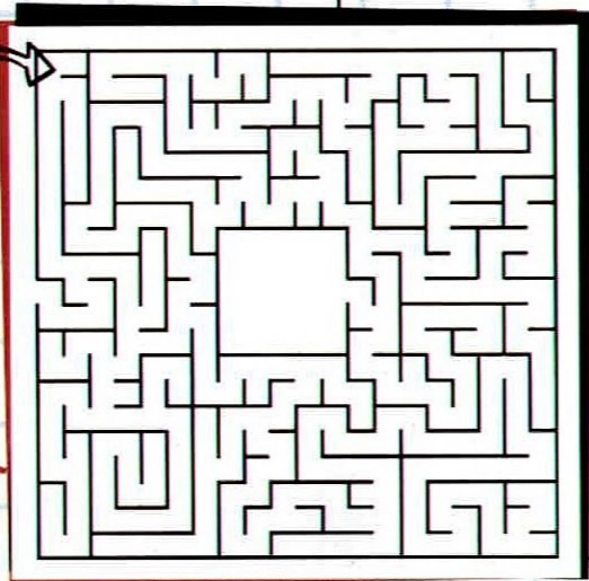
Willie Penman (far right) fires the ball past Coventry's Bill Glazier in October 1968

JUNIOR

Reds

Maze

CAN YOU FIND YOUR WAY
THROUGH THE MAZE?



Wordsearch

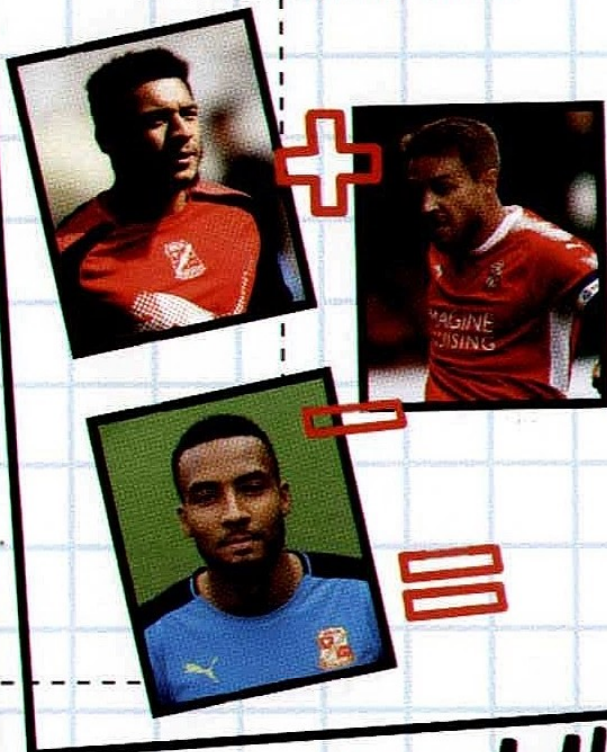
O	C	S	N	O	V	U	U	C	P	O	K
L	I	N	G	A	N	Z	I	O	R	V	H
X	P	L	A	O	G	I	R	U	Q	U	F
N	R	L	A	R	H	J	F	N	Q	V	R
O	W	R	A	R	J	G	B	T	D	N	O
I	E	X	U	Y	C	V	L	Y	O	F	E
Y	H	H	C	U	E	G	D	T	V	F	L
P	S	A	U	D	K	R	T	Z	U	R	K
P	L	P	K	N	H	S	S	J	F	A	F
Y	Y	S	S	V	E	R	H	D	O	P	F
B	U	M	L	I	L	C	W	J	P	H	Q
E	C	D	D	X	R	L	M	K	U	M	H

CAN YOU FIND THE
5 HIDDEN WORDS?

- ☐ NOTTS
- ☐ COUNTY
- ☐ PLAYERS
- ☐ LINGANZI
- ☐ GOAL

Shirt Number Challenge

ADD THE PLAYERS SHIRT NUMBERS
UP TO WORK OUT THE ANSWER!

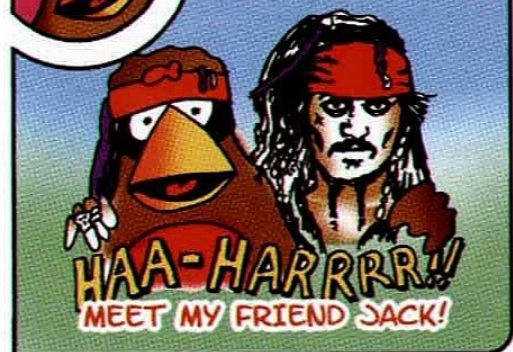


ANSWERS: Shirt Number Challenge -
Keshi Anderson 30 + Oliver Lancashire 06 -
Lawrence Vigouroux 01 = 35, Spot the Ball - 2

BIRDBRAIN! 12



ROCKIN' ROBIN'S
NAME THAT BIRD QUIZ!



ANSWER TO NUMBER 11 - PEACOCK!

Spot the Ball





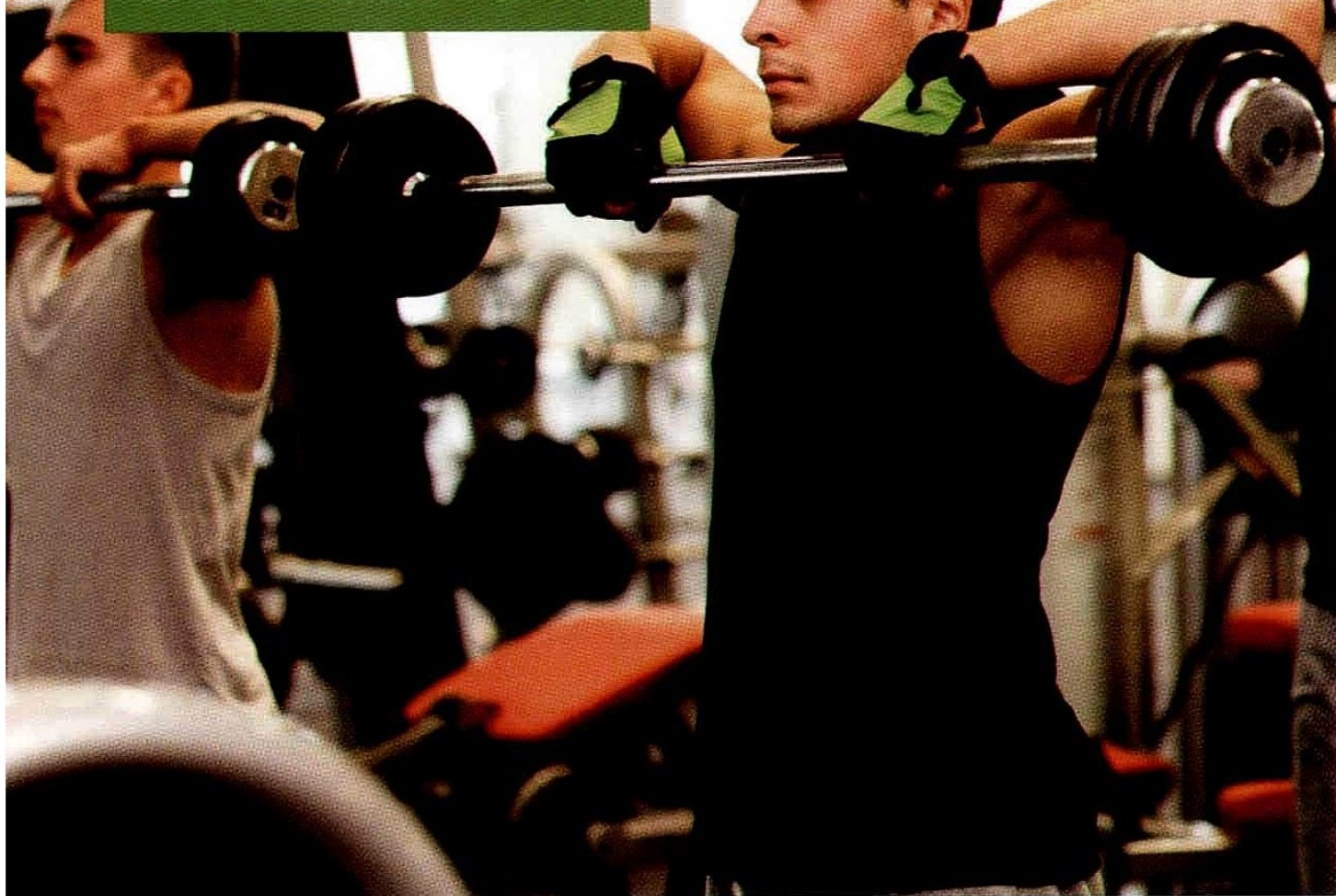
AMINE

LINGANZI



#16

A BETTER WAY TO KEEP FIT



Whatever activities you enjoy,
you're sure to find something you
love at your local Better leisure centre.

Activities and facilities include*:

- Fully equipped gyms
- Swimming pools
- Fitness classes
- Racquet sports
- Lessons and courses

Choose from a variety of pre-paid
and pay & play membership options.

Available at:

- Croft Sports Centre
- Delta Tennis Centre
- Dorcan Recreation Complex
- Haydon Centre & Gym
- Health Hydro
- Link Centre
- Oasis Leisure Centre



BETTER
the feel good place

*Activities and facilities vary from centre to centre. Better is a registered trademark and trading name of GLL (Greenwich Leisure Limited), a charitable social enterprise and registered society under the Co-operative & Community Benefit & Societies Act 2014 registration no. 27793R. Registered office: Middlegate House, The Royal Arsenal, London, SE18 6SX. Inland Revenue Charity no: XR43398

Supporters CLUB

WITH ANNIE



Good afternoon and welcome to the County Ground to all Swindon Town Supporters.



We also extend a warm welcome to the management, players and supporters from NOTTS COUNTY who have travelled to the game today.

As we come to the end of another year I felt it was a time to reflect on some of the things we have done over past decade.

It is with thanks to you, the supporters of Swindon Town with your help, support and generous participation in our fundraising activities that the SUPPORTERS CLUB has been able to contribute, promote, sponsor and in the majority of cases purchase the following items for the benefit, convenience and enjoyment for all supporters of SWINDON TOWN FOOTBALL CLUB:

- Fund the Swindon Town Academy boys who have competed in the prestigious annual Milk Cup Competition in Ireland for the past eight seasons.
- Supplied Youth Team tracksuits, balls, kit bags and full kits
- Man of the Match awards at all F.A. Youth Cup ties.
- Paid for the purchase, erection and contributed to the upkeep of the old Stratton Bank scoreboard.
- Purchased a wide variety of money and water saving devices from Thames Water.
- Supplied all-weather protection covers for the football pitch plus storage rollers.
- Refurbishment of Legends Lounge and amenities to encourage maximum usage of this facility.
- Regular Sponsorship, Ball, Kit, Match, Mascot and Programme packages.
- Donated various special pictures and photographic montages as displayed in The Legends Lounge.
- Refurbishment of food kiosks, concourse TV Monitors and Auto Card entry system to the stadium.
- New fascia to the Football Clubs main entrance and canopy added to the entrance of Legends Lounge.
- Help fund the construction of the new Ticket Office plus the enlarged and improved shop layout.
- Made donations to a variety of charities and worthy causes, including the Sam Allen grave repairs.
- In association with SAS Travel, paid for the purchase of 25 Fitness Measurement Devices

We would like to wish you all a very Happy, healthy and prosperous New Year.

ANN ALDER, Chairperson



FOR POINTS

Lucy Fisher	50p
David Webb	£1
Peter Scull	£5
Peter Money	£1
Paul Plowman	£1
Ann Alder	£1
Shirley Hollister	£1
Dave Johnson	£2
Mike McQueen	£3
Rod & Hilda Sheppard	£1
Eileen Bailey	£1
Jerry Walsh	£1
Sue Mitchell	50p
Mick Russell	£1
John Thrush	50p
Les Cannings	50p
Brad Carter	50p
Mavis & Pete Knight	50p
Andy Whittaker	£3
Keith Smith	£1
Len Clutterham	£1
John Lodge	£1
Dick Mattick	£2
Caroline Cove	£1
Terri Venables	50p
(from 01/09/17)	
Mike Dew	50p
Roger Bunce	50p
Anonymous	£1
TOTAL	£33.50
- so far raising	
£1,068.50	

CONTACT US

Press and Media:

E: enquiries@swindontownsupportersclub.com

T: 07500 788 467

Membership:

E: membership@swindontownsupportersclub.com

Away Travel:

E: sastravel@sky.com

T: 07535 917872

£'s for Points:

E: ann@swindontownsupportersclub.com

6 GAME MATCH TICKET BUNDLE

**NOW
ON SALE**



Choose two from the following 4 games:



vs Cheltenham Town 10.03.18
vs Forest Green Rovers 13.01.18
vs Yeovil Town 03.03.18
vs Port Vale 17.02.18



Then choose four from the following 6 games:



vs Morecambe 30.03.18
vs Mansfield Town 10.02.18
vs Grimsby Town 21.04.18
vs Crewe Alexandra 27.01.18
vs Carlisle United 07.04.18
vs Accrington Stanley 05.05.18



Benefits include:

- Season Ticket at the cheaper bundle renewal rate for 2018/2019
- Guaranteed seat at any play-off games

Adult pricing:

Side stand - £110 (Only £18.30 per game)

Town End - £99 (Only £16.50 per game)

GRAB YOUR OWN SLICE OF THE ACTION

SLICES OF PIZZA

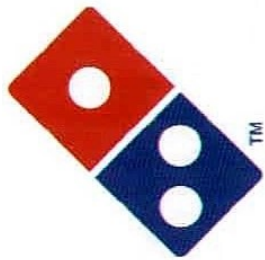
CHEESE AND TOMATO

— OR —

PEPPERONI



PER
SLICE



Domino's

**AVAILABLE
MATCH DAYS**

FROM 2PM ONWARDS

swindon
Swindon Town Football Club



Swindon, say

HELL NO
TO SLOW
broadband

Relish[®] Broadband
rebooted

Find out more at relish.net/swindon
visit us on Facebook @RelishSwindon
or call **0330 686 6008**



GET GAME READY



BRING  IT ON!

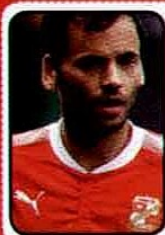
2017/18 Player Sponsors



01
LAWRENCE
VIGOUROUX

Sponsored by...

PAUL
HEDGES



02
BEN
PURKISS

Sponsored by...

DAVID M. COE
FINANCIAL PLANNING LTD



03
CHRIS
HUSSEY

Sponsored by...



04
MATT
PRESTON

Sponsored by...



05
CHRIS
ROBERTSON

Sponsored by...

JULIAN PEARCE &
MARK UNWIN



06
OLIVER
LANCASHIRE

Sponsored by...

THE STFC DISABLED
SUPPORTERS CLUB



07
PAUL
MULLIN

Sponsored by...

DAVID M. COE
FINANCIAL PLANNING LTD



08
JAMES
DUNNE

Sponsored by...



09
LUKE
NORRIS

Sponsored by...



10
JOHN
GODDARD

Sponsored by...

THE STFC DISABLED
SUPPORTERS CLUB



11
JAMES
BROPHY

Sponsored by...



12
WILL
HENRY

Sponsored by...

PAUL
HEDGES



14
ELLIS
IANDOLO

Sponsored by...



15
TOM
SMITH

Sponsored by...



16
AMINE
LINGANZI

Sponsored by...





17
HARRY
SMITH

Sponsored by...



18
DONAL
McDERMOTT

Sponsored by...

MONAHANS
CHARTERED
ACCOUNTS



19
TIMI
ELSNIK

Sponsored by...



20
KELLAN
GORDON

Sponsored by...

PAUL
HEDGES



21
REECE
CHARLES-COOK

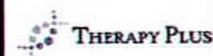
Sponsored by...

PAUL
HEDGES



22
KAIYNE
WOOLERY

Sponsored by...



24
KYLE
KNOYLE

Sponsored by...



25
DION
CONROY

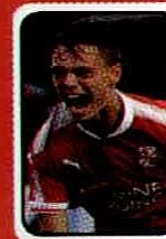
Sponsored by...



26
JORDAN
YOUNG

Sponsored by...

TO SPONSOR ME
CALL 0330 002 0020



27
SCOTT
TWINE

Sponsored by...



30
KESHI
ANDERSON

Sponsored by...

ROBINS
SUITE VIP



31
MATTY
TAYLOR

Sponsored by...



M
DAVID
FLITCROFT

Sponsored by...



BEN
FUTCHER

Sponsored by...



DEAN
THORNTON

Sponsored by...

MDT
EUROPE LTD



CHRIS
NEVILLE

Sponsored by...



ROCKIN
ROBIN

Sponsored by...

TO SPONSOR ME
CALL 0330 002 0020

SPONSOR A PLAYER CALL ON: 0330 002 0020

2017-18 **STAT PACK**sky **BET**
LEAGUE TWO**SWINDON TOWN**

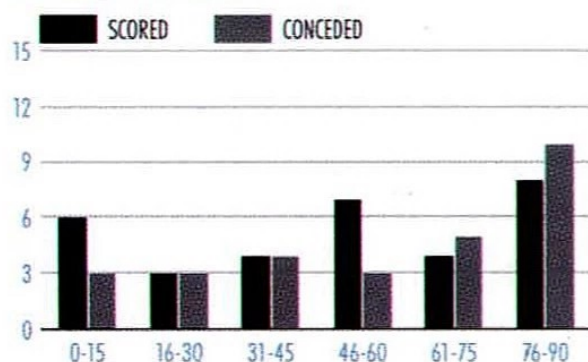
v

NOTTS COUNTY**MATCH FACTS**

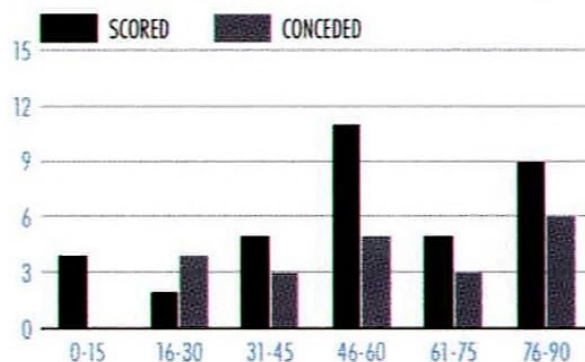
The Robins have netted six goals in their last three matches against Notts County, more than in their previous nine combined in all competitions (five goals).

**MATCH FACTS**

Notts County have failed to score at the County Ground since their 2-1 victory back in April 2011.

**GOALS****AV. GOALS PER GAME****SHOTS (EX. BLOCKED)****% SHOTS ON TARGET****CLEAN SHEETS****% GOALS TO SHOTS****CORNER KICKS****GOALS CONCEDED****AV. GOALS CONCEDED PER GAME****FOULS****GOAL TIMES**

*Data excluding games played 22nd-26th

GOAL TIMES

2017-18 **STAT PACK**sky **BET**
LEAGUE TWO**LEAGUE TWO TOP FIVES****GOALS**

1		HYLTON	13
2		DENNIS	11
3		DOIDGE	11
4		GRANT	11
5		ADEBAYO AKI...	10

ASSISTS

1		COOPER	9
2		ADEBAYO AKI...	6
3		TAYLOR	6
4		WRIGHT	6
5		CAMPBELL-RYCE	5

SHOTS ON TARGET

1		EISA	31
2		UCHE IKPEAZU	30
3		DENNIS	28
4		HYLTON	27
5		ADEBAYO AKI...	26

MINUTES PER GOAL

1		HYLTON	135
2		SZMODICS	136
3		DENNIS	149
4		GRANT	152
5		NORRIS	153

% OF GOALS INVOLVED IN

1		DOIDGE	57
2		POPE	57
3		DENNIS	52
4		KEE	47
5		COULTHIRST	46

MINUTES PER CHANCE CREATED

1		REID	138
2		SHINNIE	173
3		COOPER	191
4		TAYLOR	214
5		MCALINDEN	234

FOULS

1		UCHE IKPEAZU	63
2		ADEBAYO AKI...	55
3		POPE	52
4		MANDRON	51
5		NEWTON	48

MINUTES PER GOAL CONCEDED

1		KRYSIK	50
2		ANYON	51
3		COLLINS	51
4		RICHARDS	53
5		ROSS	56

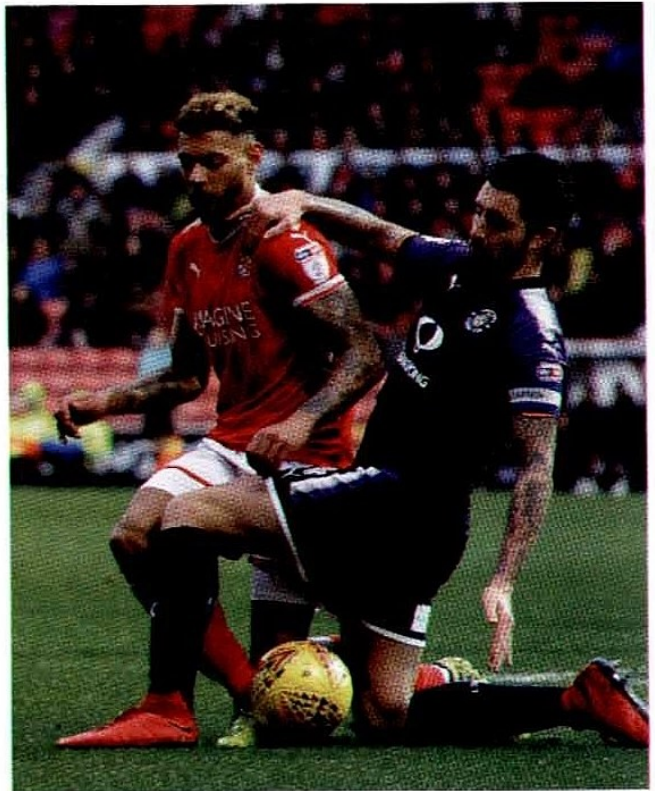
LEAGUE TWO SPOTLIGHT

Reuben Reid has been directly involved in six goals in his last six league appearances against Barnet (two goals, four assists).

LEAGUE TWO SPOTLIGHT

Francois Zoko opened the scoring for Yeovil against Morecambe in this season's reverse fixture (2-2 in September).

*Data excluding games played 22nd-26th





SWINDON TOWN



Subs: Charles-Cook, Robertson, Knoyle, (Kellan Gordon 62), (Ellis Iandolo 74), Goddard, Twine

Booked: James Dunne, Olly Lancashire



REFEREE
Gavin Ward

Attendance: 8,526 | 26/12/2017
The Energy Check County Ground

0-5

SHOTS



SHOTS ON TARGET



CORNERS



FOULS



POSSESSION



LUTON TOWN

Scorers: James Collins (48), Danny Hylton (54), Matty Taylor OG (65), Harry Cornick (72), Elliott Lee (84)

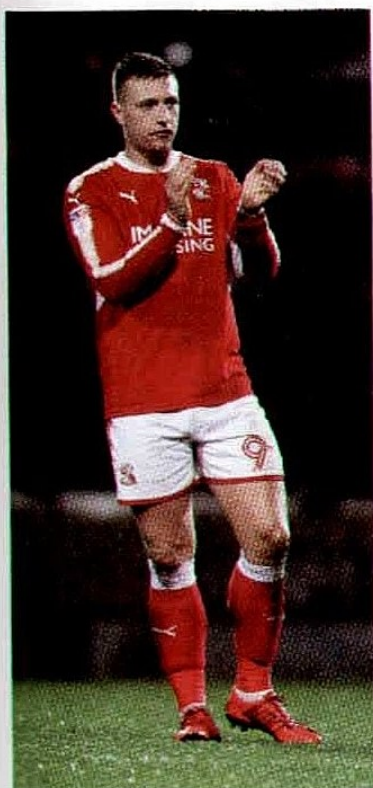


Subs: Shea, Gambin, D'Ath, (Harry Cornick 66), (Pelly-Ruddock Mpanzu 83), Famewo, (Elliott Lee 76)

Booked: Danny Hylton









FIT

evoKNIT sock creates a supportive and snug fit around the ankle.



FEEL

Super thin, soft leather provides the ultimate touch and feel on the ball.



FAST

Lightweight, flexible outsole and traction stud configuration support speed.

PUMAONE

PLAY PERFECT



WHEN YOU SEE RED, ARE YOU SURE IT'S NOT GREEN, OR BLACK?

NORMAL VISION



COLOUR-BLIND SIMULATION (PROTANOPIA)



Approximately **one in 12 men** inherit colour blindness. It's carried on the X-chromosome, so only **one in 200 women** inherit the condition.

It can be a real issue in football, whether you're watching, playing, managing or officiating. Imagine not being able to tell the difference between kit colours and how that would affect you, your teammate or your child.

There are three types of colour blindness – and myriad colour combinations which cause problems. The common perception that colour-blind people only confuse reds and greens is a myth.

The FA has been working closely with UEFA and specialist organisation Colour Blind Awareness to highlight the issue. The intention is to positively influence decision-makers at every level of the game and improve the experience of colour-blind people – whatever their involvement in football.

This work has seen the production of a comprehensive guidance booklet. You can read and download it at www.TheFA.com/colourblindness

And please visit the Colour Blind Awareness website: colourblindawareness.org for ways you can help maximise awareness.

Together, let's make sure football's future is FOR ALL.



PROUD SPONSOR OF

Good luck in the 2017/18 season.



**Working today...
...for a better tomorrow**

Established in 1900, today's Hills Group is a dynamic Wiltshire business that covers a wide area of western and southern England.

The Group's operations remain dedicated to three core activities:

- Specialist waste management services and recycling solutions
- Production and sale of ready-mixed concrete, sand, stone and gravel
- Building high quality new homes and undertaking contract building projects



T: 01793 781200

Follow Hills Group  

www.hills-group.co.uk

MOMENT TIME



13TH NOVEMBER 2014

Massimo Luongo celebrates his strike against Notts County at Meadow Lane in November 2014, with a brace from Andy Williams helping to complete a comfortable 3-0 rout for Town.





Full Time



Proud partner of





Wilf White

POSITION

Right Wing

FAVOURITE OTHER CLUB

Manchester United

BORN

Bath, 6 Feb 2001

YOUR SPORTING IDOL

David Beckham

NICKNAME

Wilfy

BEST SUBJECT AT SCHOOL

English

FIRST TEAM PLAYED FOR

Dilton Marsh Rovers

FAVOURITE TV PROGRAMME

Jeremy Kyle

FIRST JOINED STFC WHEN?

2015



Nationwide

Building Society

Proud supporters of



nationwide.co.uk

Proud to be in Partnership



ENERGY
CHECK

Your Utilities Simplified



Welcome to

The Energy Check County Ground

www.TheEnergyCheck.co.uk





Pick from a quality line up

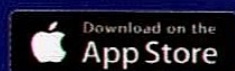


Isn't it time you
joined the team?

Always cheaper on quality trade
brands with Wickes TradePro.

*Wickes TradePro members get 10% off purchases in-store and online. The Wickes TradePro discount does not apply to purchases of Showroom Kitchens and Bathrooms, Gift Vouchers, or Delivery charges. For full terms & conditions please visit www.wickes.co.uk/trade/terms-conditions.

In the trade? It's cheaper with Wickes TradePro.
To sign up, download the App.



BANNED IN THE MORNING YOU'RE GETTING BANNED IN THE MORNING

All 72 EFL Clubs have signed up to a new Chairman's Charter to help put an end to the dangerous use of pyrotechnics.

It is already a criminal offence to enter a football stadium while in possession of a flare, smoke bomb or firework.

Any supporter now found to be in breach of the terms of the Chairman's Charter will also face a minimum three-season Club ban.



THE STFC STORE
BOXING
DAY
SALE
IS NOW ON!

FOOTBALL TO AMSTERDAM

1-3 June 2018

400 fans, 3 days, 2 countries, 1 aim.
Help stop prostate cancer being a killer.

prostatecanceruk.org/amsterdam



**PROSTATE
CANCER UK**



LMA
LEAGUE MANAGERS
ASSOCIATION



FOOTBALL IN THE *Community*

GOOD AFTERNOON AND WELCOME TO TODAY'S GAME AGAINST NOTTS COUNTY.

Hopefully you have all had a good Christmas and 3 points from Town today will improve your festive cheer .

I would like to start by welcoming our Community Trust main sponsors Intel to today's game. Intel are also the club's match sponsors today and we hope that they have an enjoyable

afternoon with us here at The Energy Check County Ground celebrating 3 points. Intel's support over the last 5 years have enabled our Community Programme to expand and thrive and together we look forward to continuing our special partnership for many seasons to come.

STFC C6 FOOTBALL EDUCATION PROGRAMME

It's been a hectic start to the season this year for our Football Education Programme which is ran in partnership with the Commonweal School. We were proud to welcome 34 additional new male and female players in September who joined our current Year 13's. The students have started to adjust to the demands of the 6th form ensuring they complete their education whilst developing as footballers. Since September our two male and two females teams have already completed 56 fixtures.



THE STFC C6 BOYS

Our male teams both compete in the National U19 Youth Development League and have had strong starts to the season. Both teams currently sit comfortably in the top half of the table. The Year 13's best result of the season was a 1-0 win against league leaders West Ham which was the East London side's first defeat of the season. The boys need to improve their away form to improve their chances of finishing higher in the table. The Year 12's best result was a win against Premier League side Birmingham City in the National Cup second round on penalties. Both teams now look forward to playing against the top two teams in the Southern Premier League as they face Crystal Palace and Tottenham Hotspur in the third round of the cup.



THE STFC C6 GIRLS

The Year 13 girls now compete in the highest level of female college football and have more than held their own in the Category 1 league. The girls have approached every game



with a positive mindset and have picked up some really encouraging wins. This league is full of players that have international commitments and its extremely satisfying to know that we can compete with the best female teams in the country.

The Year 12 Girls sit proudly at the top of the Category 2 league and were also finalists of the National Youth U19's Cup at St Georges Park in November. The girls defeated Oxford, Burton Albion and Chelsea on route to the final but were eventually beaten 2-0 by Sunderland in the final.

Both the Year 12 and 13's have jointly represented STFC C6 in the ESFA National Schools cup and we are looking forward to a quarter final match against Reading or Barking Abbey college in 2018.

DO YOU WANT TO BE A PART OF STFC C6 IN 2018 -2019?

We have already started the interview process for the 2018 -2019 season. You can still apply by emailing shane@stfc-fitc.co.uk for more information. We will be running trials for both the girls and boys in the final week of January and first week of February. If you know of a participant that is currently in Year 11 with a passion for football that would like to be part of this Football Education Programme then make sure they apply.

Enjoy the game

COYR



Morris Owen

chartered accountants and business advisers

Find out what makes Morris Owen
more than just accountants



- Chartered accountants
- Business advisers
- Chartered tax advisers
- Independent financial advisers

Call Dave on 01793 603900 or
dave.bond@morrisowen.com
www.morrisowen.com

Registered to carry on audit work by the Institute of
Chartered Accountants in England and Wales
Authorised and regulated by the Financial Conduct Authority
Registered with the Chartered Institute of Taxation
as a firm of chartered tax advisers

Motor Insurance

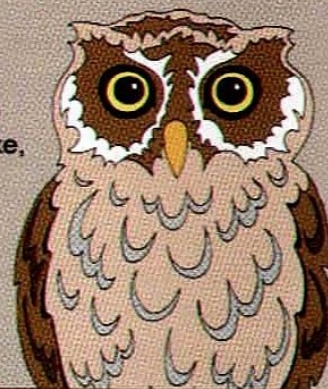
Be Wiser... Save Money

Freephone:

0800 0930 499

www.bwsfc.co.uk

For all your insurance
needs - car, motorbike,
van, multi-vehicle,
home & travel



Be Wiser Insurance®

think gyms are boring?


you haven't tried ours.



blunsdon
fitness+



membership from
just £44 a month

 blunsdonfitness



PREPAY
SOLUTIONSTM
an Edenred brand

**Europe's leading
prepaid provider**

www.prepaysolutions.com

An alliance between Edendred
and Mastercard® International
Incorporated

PRIMARY

HOMES & LETTINGS

01793 641641

www.primaryhomesandlettings.co.uk

*Your Local
Family Run
Business*

Dressability, the charity that adapts clothing for people with a disability



An additional panel has been inserted in to the underarm seam of this shirt to accommodate any Lymphedema swelling, allowing you to continue wearing your own clothes in the correct size.

01793 512878
www.dressability.org.uk

Dressability

24/7 Emergency Call Out • All Works Guaranteed • Reliable & Affordable

CentraHeat
Heating, Plumbing and Renewable Energy

Swindon's Heating & Plumbing Specialists

- Full Central Heating Installations
- Boiler Replacement, Servicing & Repair
- All Plumbing & Maintenance Services
- Full Bathroom Installations
- Landlord & Letting Agent Services
- Renewable Energy Installations



Find us on
Facebook

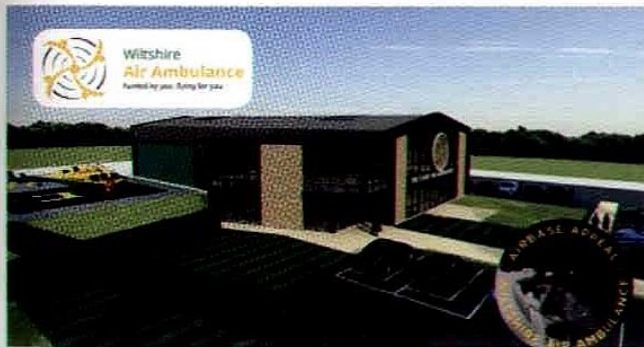
www.CentraHeat.co.uk

PayPal **MasterCard** **VISA**

T. 01793 878636 www.CentraHeat.co.uk M. 07739 357617



Wiltshire
Air Ambulance
Pursuing your future for you



Support your local air ambulance by donating to our Airbase Appeal.

DONATE ONLINE:
www.wiltshireairbaseappeal.co.uk

Thanks to your donations we now have just under £1million left to raise to build and equip our new airbase at Outmarsh Farm, Semington near Melksham.

help to build a better future for your air ambulance



registered charity number 1144097

© Wiltshire Air Ambulance. All rights reserved.

jamprint

LITHOGRAPHIC PRINTING SOLUTIONS

Proud printing partners of
Swindon Town Football Club

**For all your
printing needs
contact**

Jake Fortune

on

07725 191 206

01249 823950

jake.fortune@jamprint.co.uk

www.jamprint.co.uk

**10% DISCOUNT OFF
YOUR NEXT ORDER**

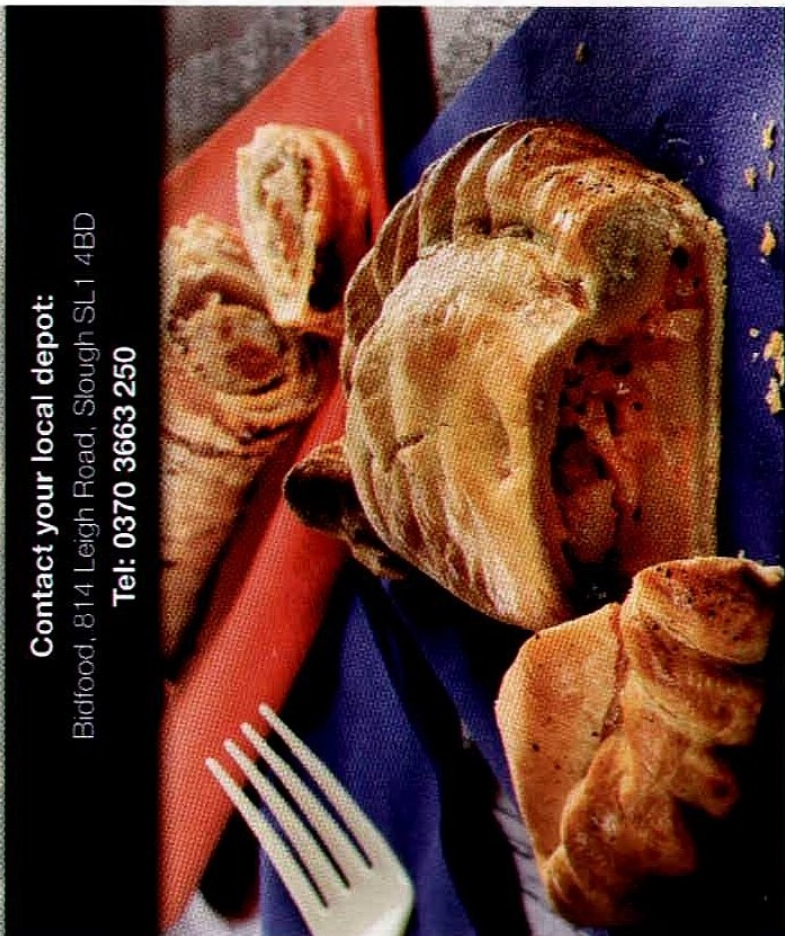
Bidfood

**are proud to sponsor
Swindon Town Football Club**

Contact your local depot:

Bidfood, 814 Leigh Road, Slough SL1 4BD

Tel: 0370 3663 250



Bidfood
Inspired by you

Delivering you more

www.bidfood.co.uk

ON THE ROAD



STEVENAGE

16/01/2018 • KICK-OFF: 7:45PM

THE LAMEX STADIUM • SKY BET LEAGUE TWO



BY ROAD

Leave the A1 (M) at Junction 7 and take the A602 towards Stevenage. Go straight across the first roundabout and as you approach the next roundabout you can see the floodlights of the ground over on the right.



PARKING

If you go straight across the roundabout then you will see the entrance to a large car park on your left, which is free to park in. The car park though has only one entrance/exit so this can lead to a bit of congestion after the game has ended. Please avoid parking at the nearby Roaring Meg Retail Park on Saturday and midweek matchdays as you are only allowed to park there for 90 minutes. Staying longer could see you hit with a £100 parking ticket. There is also street parking in the local area.



BY TRAIN

Stevenage Railway Station is about one mile away from The Lamex Stadium. Leave the station booking hall and turn left towards the town. Take the stairs on the right before the bridge over the dual carriage way and head along the A602, Lytton Way. At the roundabout, which has the police station on the right, take the second exit onto Six Hills Way. At the next roundabout take the third exit (South) continuing along the A602, Monkswood Way, passing a large Asda store on your right. After about 3/4's mile you will arrive at a roundabout and the Lamex Stadium will be opposite you on the other side of the A602.



PUBS

There is a large Club House bar at the ground, behind the South Stand, which is popular with both home and away fans alike. Otherwise, there is the 'Our Mutual Friend' pub in Broadwater Crescent, which is about a 15-minute walk away from the ground.



LAST TIME WE MET

02/12/2017

Stevenage 5

Swindon Town 2

The Reds were in Emirates FA Cup Second Round action at The Lamex Stadium last month but found themselves on the end of a heavy defeat.



TICKETS:

Town fans can now buy tickets for this game in-store or online via www.eticketing.co.uk



SAS TRAVEL

BARNET

01/01/2018

Members - £14

Non-Members - £15

Departs at 11:00am

STEVENAGE

16/01/2018

Members - £14

Non-Members - £15

Departs at 3:30pm

TICKET OFFICE



FOREST GREEN ROVERS • SATURDAY 13TH JANUARY 2018 (3PM)

HOME

TICKET PRICES FROM

Adults £23/£19 • Over 65's/Student £17/£15

U21's £10 • U18's £6

Now On General Sale



CREWE ALEXANDRA • SATURDAY 27TH JANUARY 2018 (3PM)

HOME

TICKET PRICES FROM

Adults £23/£19 • Over 65's/Student £17/£15

U21's £10 • U18's £6

Now On General Sale



BARNET • MONDAY 1ST JANUARY 2018 (3PM)

AWAY

TICKET PRICES FROM

Adults £23 • Concessions £14 • U17's £5

Now On General Sale



STEVENAGE • TUESDAY 16TH JANUARY 2018 (7.45PM)

TICKET PRICES TO BE ANNOUNCED IN DUE COURSE

2017/18 PRICES

Matchday Prices

	SIDES	T.END
Adults:	£23	£19
Over 65s/Student:	£17	£15
Under 21s:	£10	£10
Under 18s:	£6	£6
Under 11s:	£2	£2
Junior Red Under 11s:	FREE	

Family Prices

	SIDES	T.END
1 Adult, 2 U18s:	£32	N/A
1 Adult, 1 U18, 1 U21:	£36	N/A
2 Adults, 1 U18:	£48	N/A
2 Adults, 1 U21:	£52	N/A
2 Adults, 2 U18s:	£53	N/A
2 Adults, 1 U18, 1 U21:	£57	N/A
2 Adults, 2 Under 21s:	£61	N/A
2 Adults, 3 Under 18s:	£58	N/A

Please note Juniors must be accompanied by an Adult in
The Better Town End.

Tickets available by phone & online...

STFC Box Office: 0871 876 1993

www.eticketing.co.uk/swindontown

BUZZ gym
Swindon

**JUST £19.99
PER MONTH
OPEN 24 HOURS**

CARDIO | CLASSES | STRENGTH | FUNCTIONAL

NEWJAX

**Drainage & Property
Maintenance**

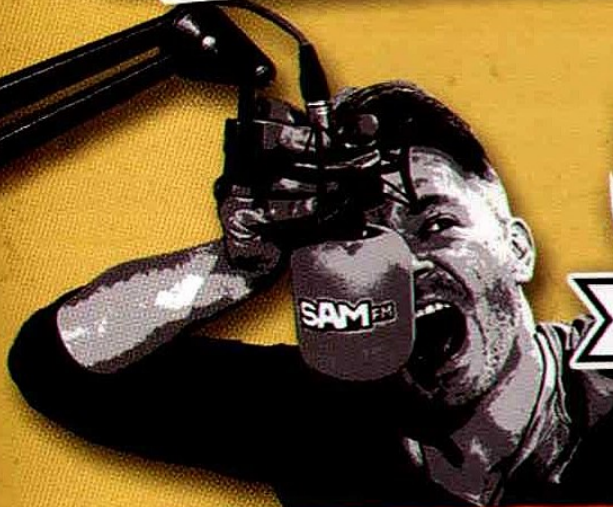
07775 710 047 • 07720 237 086 • 01793 324 040

www.newjax.co.uk

newjax@outlook.com

SAM FM

107.7



LISTEN ON FM - ON THE APP - AT SAMFM.CO.UK



— FUNDING PARTNERS —

Since 2000, the Football Foundation has been transforming grassroots facilities across the country thanks to the generous investment provided by the Premier League, The FA and the Government via Sport England.

The total area of every all-weather pitch the Football Foundation has funded is equivalent to **NEW YORK'S CENTRAL PARK!**

39,160

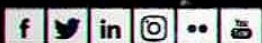


If every changing room the Football Foundation ever funded was combined, 39,160 players would be able to change simultaneously!

If every all-weather and natural grass pitch the Football Foundation funded was laid back-to-back, it would stretch from London's **BIG BEN** TO **CALAIS!**



Football Foundation



www.footballfoundation.org.uk

Charity No. 1075109 Company No. 3876305

x351

If every goalpost the Football Foundation funded were stacked on top of each other, it would create a structure equivalent to the height of **351 WEMBLEY STADIUMS!**

2017/18 FIXTURES AND RESULTS

DATE	FIXTURE	RES./K.O	ATT. (AWAY)	STARTING XI						
AUGUST										
Sat Aug 5	Carlisle United	W2-1	6,036 (557)	Vigouroux	Purkiss	Conroy	Lancashire	Hussey	Dunne	
Tue Aug 8	Norwich City CC1	L2-3	13,166 (321)	Vigouroux	Purkiss	Robertson	Lancashire (1)	Hussey	Dunne	
Sat Aug 12	Exeter City	D1-1	7,795 (807)	Vigouroux	Purkiss	Robertson	Lancashire	Hussey	Dunne	
Tue Aug 15	West Ham United (EFLT)	L2-3	2,082 (285)	Henry	Purkiss	Conroy	Lancashire	Hussey	Dunne	
Sat Aug 19	Morecambe	W1-0	1,655 (472)	Vigouroux	Purkiss	Conroy	Lancashire	Hussey	Dunne	
Sat Aug 26	Crawley Town	L0-3	6,613 (87)	Vigouroux	Purkiss	Conroy	Lancashire	Hussey	Dunne	
SEPTEMBER										
Sat Sep 2	Barnet	L1-4	5,895 (246)	Vigouroux	Purkiss	Robertson	Lancashire	Hussey	Taylor	
Sat Sep 9	Luton Town	W3-0	8,455 (832)	Vigouroux	Purkiss	Conroy	Lancashire	Hussey (1)	Dunne	
Tue Sep 12	Notts County	L0-1	5,107 (336)	Vigouroux	Purkiss	Conroy	Lancashire	Hussey	Taylor	
Sat Sep 16	Stevenage	W3-2	6,022 (?)	Vigouroux	Purkiss	Conroy	Lancashire	Hussey	Dunne	
Fri Sep 22	Forest Green Rovers	W2-0	3,305 (804)	Vigouroux	Purkiss	Robertson	Lancashire (1)	Hussey	Dunne	
Tue Sep 26	Coventry City	L1-2	6,340 (702)	Vigouroux	Purkiss	Robertson	Lancashire	Taylor	Dunne	
Sat Sep 30	Cambridge United	W2-0	5,847 (326)	Vigouroux	Purkiss	Preston	Lancashire	Taylor	Dunne	
OCTOBER										
Sat Oct 6	Cheltenham Town	L1-2	5,050 (1,402)	Charles-Cook	Purkiss	Preston (1)	Lancashire	Taylor	Dunne	
Sat Oct 14	Mansfield Town	W3-1	4,081 (523)	Charles-Cook	Purkiss	Preston	Lancashire	Taylor	Dunne	
Tue Oct 17	Lincoln City	L0-1	5,684 (?)	Charles-Cook	Purkiss	Preston	Lancashire	Taylor	Dunne	
Sat Oct 21	Wycombe Wanderers	W1-0	7,114 (?)	Charles-Cook	Purkiss	Preston	Lancashire	Taylor	Dunne	
Sat Oct 28	Port Vale	W3-0	5,071 (?)	Charles-Cook	Purkiss	Preston	Lancashire	Taylor (1)	Dunne	
Tue Oct 31	Wycombe Wanderers (EFLT)	W1-0	1,236 (?)	Charles-Cook	Knolly	Preston	Robertson	landolo	Dunne	
NOVEMBER										
Sat Nov 4	Dartford (FAC1)	W5-1	2,705 (?)	Charles-Cook	Purkiss	Preston	Lancashire	Taylor	Dunne	
Wed Nov 8	Bristol Rovers (EFLT)	W4-2	1,657 (197)	Charles-Cook	Knolly	Robertson	Lancashire	landolo	Goddard (1)	
Sat Nov 11	Chesterfield	D2-2		Charles-Cook	Purkiss	Preston	Lancashire	Taylor	Dunne	
Sat Nov 18	Yeovil Town	W2-1	3,622 (1,144)	Charles-Cook	Purkiss	Preston	Lancashire	Taylor	Dunne	
Tues Nov 21	Grimsby Town	L2-3	3,023 (199)	Charles-Cook	Purkiss	Preston	Lancashire	Taylor	Dunne	
Sat Nov 25	Newport County	L0-1	6,764 (?)	Charles-Cook	Purkiss	Preston	Lancashire	Taylor	Dunne	
DECEMBER										
Sat Dec 2	Stevenage (FAC2)	L2-5	1,883 (?)	Vigouroux	Purkiss	Preston	Lancashire	Taylor (1)	Dunne	
Tue Dec 5	Forest Green Rovers (EFLT)	L0-1	1,320 (?)	Vigouroux	Knolly	Preston	Lancashire	Taylor	Robertson	
Fri Dec 15	Colchester United	L2-3	6,020 (?)	Vigouroux	Purkiss	Preston	Lancashire	Taylor	McDermott	
Sat Dec 23	Crewe Alexandra	W3-0	3,736 (315)	Vigouroux	Purkiss	Preston	Lancashire	Taylor	Dunne	
Tue Dec 26	Luton Town	L0-5	8,526 (?)	Vigouroux	Purkiss	Preston	Lancashire	Taylor	Dunne	
Sat Dec 30	Notts County	15.00								
JANUARY										
Mon Jan 1	Barnet	15.00								
Sat Jan 13	Forest Green Rovers	15.00								
Sat Jan 16	Stevenage	19.45								
Sat Jan 20	Coventry City	15.00								
Sat Jan 27	Crewe Alexandra	15.00								
FEBRUARY										
Sat Feb 3	Lincoln City	15.00								
Sat Feb 6	Accrington Stanley	19.45								
Sat Feb 10	Mansfield Town	15.00								
Tue Feb 13	Wycombe Wanderers	19.45								
Sat Feb 17	Port Vale	15.00								
Sat Feb 24	Chesterfield	15.00								
MARCH										
Sat Mar 3	Yeovil Town	15.00								
Sat Mar 10	Cheltenham Town	15.00								
Sat Mar 17	Cambridge United	15.00								
Sat Mar 24	Exeter City	15.00								
Fri Mar 30	Morecambe	15.00								
APRIL										
Mon Apr 2	Crawley Town	15.00								
Sat Apr 7	Carlisle United	15.00								
Sat Apr 14	Newport County	15.00								
Sat Apr 21	Grimsby Town	15.00								
Sat Apr 28	Colchester United	15.00								
MAY										
Sat May 5	Accrington Stanley	15.00								

SUBS USED					REFS.			
Goddard	Linganzi	Brophy	Mullin (1)	Norris (1)	H. Smith	Iandolo	Thomas	A Haines
Thomas	T. Smith	Brophy	Mullin (1)	H. Smith	Iandolo			G Eltringham
McDermott	Linganzi	Brophy	Mullin	H. Smith	Norris	Woolery (1)	Thomas	D Drysdale
McDermott	Linganzi	Iandolo	Woolery	Norris (1)	Mullin (1)	H. Smith	Brophy	J Busby
McDermott (1)	Linganzi	Mullin	Woolery	Norris	Brophy	Robertson	H. Smith	M Heywood
McDermott	Linganzi	Mullin	Woolery	Norris	Brophy	Taylor	H. Smith	B Huxtable
McDermott	Linganzi	Elsnik	Anderson	Norris (1)	Mullin	Conroy	Woolery	J. Linnington
Mullin (1)	Woolery	Elsnik	Anderson	Norris (1)	Taylor	Gordon	Linganzi	G. Salisbury
Mullin	Woolery	Elsnik	Anderson	Norris	Gordon	H. Smith	Linganzi	S. Duncan
Mullin	Gordon	Elsnik	Anderson (1)	Norris (2)	Robertson	Linganzi	Woolery	J. Brooks
Mullin	Gordon	Elsnik	Anderson	Norris	Woolery	Taylor (1)	H. Smith	D. Drysdale
Mullin	Gordon	Elsnik	Anderson	Norris	McDermott	Linganzi	H. Smith	C. Breakspear
Linganzi	Gordon	Woolery	Anderson (1)	Norris	H. Smith (1)	Goddard	Mullin	A. Woolmer
Linganzi	Gordon	Woolery	Anderson	Norris	Goddard	McDermott	Mullin	R. Jones
Linganzi (1)	Goddard (1)	Mullin	Anderson	Norris (2)	McDermott	Woolery		O. Langford
Linganzi	Goddard	Mullin	Anderson	Norris	McDermott	Woolery		S. Oldham
Linganzi	Goddard	McDermott	Anderson	H. Smith (1)	Mullin			J. Brooks
Linganzi	Goddard	McDermott	Anderson	H. Smith	Elsnik	Mullin (1)	Gordon (1)	G. Horwood
Mullin	Elsnik	Woolery	Anderson	Gordon	H. Smith	Goddard	McDermott	K. Johnson
Mullin (1)	Elsnik (2)	McDermott	Linganzi (1)	H. Smith (1)	Goddard	Woolery	Gordon	D. Drysdale
Mullin (1)	Elsnik	Woolery (1)	Anderson	Gordon (1)	Preston	Dunne	McDermott	A. Marriner
Linganzi	Elsnik (1)	Woolery	Anderson	H. Smith	Goddard	Norris (1)	Mullin	L. Collins
Goddard	Elsnik	Norris	Anderson (1)	H. Smith	Gordon (1)	Woolery		C. Hicks
Goddard	Gordon	Woolery	Anderson (1)	H. Smith	Iandolo			M. Coy
Goddard	Iandolo	Mullin	Anderson	H. Smith	Woolery	Gordon	Brophy	J. Linnington
Goddard	Gordon	Mullin	Woolery	Linganzi (1)	Norris	H. Smith	Brophy	N. Kinseley
Iandolo	Norris	Mullin	Anderson	Linganzi	Woolery	Dunne	Gordon	R. Lewis
Iandolo	Woolery (1)	Mullin	Anderson	Linganzi	Knoble	Goddard	Gordon (1)	J. Busby
Norris (1)	Woolery (1)	Mullin	Anderson	Linganzi (1)	Gordon	Iandolo	Goddard	E. Ilderton
Norris	Woolery	Mullin	Anderson	Linganzi	Gordon	Iandolo		G. Ward

Booked Booked Sent Off

KEY: (1) = Number of goals scored.
First Substitution, Second Substitution, Third Substitution

LEAGUE TABLE

POS	TEAM	P	W	D	L	GD	PTS
1	Luton Town	24	15	6	3	39	51
2	Notts County	24	13	8	3	18	47
3	Lincoln City	24	11	7	6	12	40
4	Wycombe Wanderers	24	11	7	6	11	40
5	Colchester United	24	11	6	7	8	39
6	Exeter City	23	12	3	8	3	39
7	Coventry City	24	11	5	8	8	38
8	Mansfield Town	24	9	10	5	6	37
9	Accrington Stanley	23	11	4	8	5	37
10	Newport County	24	9	8	7	4	35
11	Swindon Town	23	11	2	10	2	35
12	Carlisle United	24	9	7	8	3	34
13	Grimsby Town	24	9	7	8	-3	34
14	Cambridge United	24	9	6	9	-8	33
15	Cheltenham Town	24	8	6	10	-2	30
16	Stevenage	24	8	6	10	-5	30
17	Port Vale	24	8	4	12	-8	28
18	Crawley Town	24	7	6	11	-8	27
19	Yeovil Town	24	7	6	11	-9	27
20	Crewe Alexandra	24	8	2	14	-12	26
21	Morecambe	24	5	7	12	-13	22
22	Barnet	24	5	5	14	-11	20
23	Chesterfield	24	5	5	14	-20	20
24	Forest Green Rovers	23	5	5	13	-20	20

RESULTS

TUE DEC 26 2017

Wycombe Wanderers 2-0
Newport CountySwindon Town 0-5
Luton TownPort Vale 1-0
Coventry CityMorecambe 1-4
Notts CountyLincoln City 3-0
StevenageCrawley Town 0-2
Colchester UnitedChesterfield 0-2
Crewe AlexandraCheltenham Town 0-2
Yeovil TownCarlisle United 3-1
Accrington StanleyCambridge United 1-0
BarnetGrimsby Town 1-1
Mansfield Town

TODAY'S GAMES

(3PM UNLESS STATED)

CAMBRIDGE UNITED V CREWE ALEXANDRA

CARLISLE UNITED V COVENTRY CITY

CHELTENHAM TOWN V NEWPORT COUNTY

CHESTERFIELD V COLCHESTER UNITED

CRAWLEY TOWN V STEVENAGE

EXETER CITY V BARNET

GRIMSBY TOWN V ACCRINGTON STANLEY

LINCOLN CITY V FOREST GREEN ROVERS

PORT VALE V LUTON TOWN

WYCOMBE WANDERERS V MANSFIELD TOWN

TOP GOALSCORERS

1	Danny Hylton	Luton Town	14
2	Jorge Grant	Notts County	13
3	Billy Kee	Accrington Stanley	12
4	Kristian Dennis	Chesterfield	12
5	Adebayo Akinfenwa	Wycombe Wanderers	11

TOP ASSISTS

1	George Cooper	Crewe Alexandra	9
2	Drey Wright	Colchester United	7
3	Matty Taylor	Swindon Town	7
4	Alan Sheehan	Luton Town	6
5	Adebayo Akinfenwa	Wycombe Wanderers	6

All data correct at time of going to print.



DAVE COBB TRANSPORT LTD

Proud supporters of STFC



Platinum alloys

Alloy Wheel Refurbishment

T: 01793 887222

sales@platinumalloys.com

www.platinumalloys.com



- Order Fulfilment
- Sameday & Urgent Courier Services
- Dedicated Vehicle Shipments
- Third Party Collections
- Temperature Controlled
- Regular Contracts
- Exhibition Work



Basepoint Business Centre, Swindon, SN5 7EX

Tel: 0345 340 5585 info@vadistribution.co.uk

www.vadistribution.co.uk



**FREE
NO OBLIGATION
QUOTATION**



YOUR LOCAL, NATIONAL & WORLDWIDE
REMOVAL SPECIALISTS

LET THE
EXPERTS

TAKE CARE OF YOUR MOVE

www.dennisremovals.co.uk

FROM THE EDITOR

Where has the last twelve months gone?! I say it all the time but this year really has flown by and it is scary to think we are halfway through this campaign already.

It only seems five minutes ago that we were getting ready for pre-season following a mad summer which saw a glut of players arrive through the door here at SN1.

They do say that time waits for no one in football and this season is certainly going by in a flash so far. Despite recent results, we're still in a decent position in the table and there is a lot of football to be played between now and May.

With a new year fast approaching it is normally the time to look back on the year that has been and reflect. It is fair to say that it hasn't been a vintage year at STFC but a new year brings new hope and hopefully a win today will set us up for an exciting 2018.

On a personal note, I was saddened to hear that young Swindon fan Brandon Guy was involved in a car accident last Friday and suffered a broken spine/neck. Brandon will be known to many of you due to his very good reports in the Swindon Advertiser. He's a massive Town fan and we're currently working on something special to give him a bit of a lift. Brandon is also due to come in for some work experience soon and I'm sure you will join me in wishing him all the very best - we hope to see you back at SN1 soon, Brandon!

Enjoy the game today and here's to three points!

ANDREW STEELE-DAVIS,
Head of Media & Communications

"Brandon will be known to many of you due to his very good reports in the Swindon Advertiser. He's a massive Town fan and we're currently working on something special to give him a bit of a lift."



Swindon Advertiser
Delivered **direct** to your door
Tel: 01793 501310

Proud Sponsors of:

NOTHING
SHOULD GET
IN THE WAY
OF YOUR
ENJOYMENT
OF SPORT

ESPECIALLY
BETTING

BETTING SHOULD ONLY ENHANCE
THE EXCITEMENT, THAT'S WHY WE
MEAN IT WHEN WE SAY

WHEN THE **FUN** STOPS 

BeGambleAware.org 

Search #3SIMPLETOOLS to find out more



BETTING, BETTER



SWINDON TOWN

MANAGER: David Flitcroft

- 01 Lawrence Vigouroux
- 02 Ben Purkiss
- 03 Chris Hussey
- 04 Matt Preston
- 05 Chris Robertson
- 06 Olly Lancashire (C)
- 07 Paul Mullin
- 08 James Dunne
- 09 Luke Norris
- 10 John Goddard
- 11 James Brophy
- 12 Will Henry
- 14 Ellis Iandolo
- 15 Tom Smith
- 16 Amine Linganzi
- 17 Harry Smith
- 18 Donal McDermott
- 19 Timi Elsnik
- 20 Kellan Gordon
- 21 Reice Charles-Cook
- 22 Kaiyne Woolery
- 24 Kyle Knoyle
- 25 Dion Conroy
- 26 Jordan Young
- 27 Scott Twine
- 30 Keshi Anderson
- 31 Matty Taylor



T: 01793 522072 / 527530
 WWW.DEACONS-JEWELLERS.COM



NOTTS COUNTY

MANAGER: Kevin Nolan

- 01 Adam Collin
- 02 Matt Tootle
- 03 Carl Dickinson
- 04 Elliott Hewitt
- 05 Richard Duffy
- 06 Haydn Hollis
- 07 Lewis Alessandra
- 08 Michael O'Connor
- 09 Shola Ameobi
- 10 Jorge Grant
- 11 Terry Hawkrige
- 12 Elliot Hodge
- 13 Branislav Pindroch
- 14 Jonathan Forte
- 15 Curtis Thompson
- 16 Shaun Brisley
- 17 Alan Smith
- 19 Nicky Hunt
- 20 Liam Walker
- 22 Ryan Yates
- 23 Daniel Jones
- 24 Robert Milsom
- 26 Callum Saunders
- 30 Jon Stead
- 34 Ross Fitzsimons
- 35 Joe Searson
- 37 Alex Howes
- 38 Mike Edwards
- 39 Sam Osborne
- 44 Kevin Nolan

MATCH OFFICIALS



REFEREE:

Ben Toner



ASSISTANT:

Christopher Husband



ASSISTANT:

Louis Marks



FOURTH OFFICIAL:

Kevin Morris

NEXT UP AT THE ENERGY CHECK COUNTY GROUND



V FOREST GREEN ROVERS

13/01/2018

KO: 3PM

SPONSORS

MATCH

Intel

MATCHBALL

John Hughes Racehorse Transport

CAPTAIN

Cotswold Farm Machinery

FOLLOW US ON...



@Official_STFC



/SwindonTown
FootballClub



@OfficialSTFC